



CANTERBURY BEEKEEPERS



A branch of Kent Beekeepers Association

EDITOR'S NOTES

Tales of minor woe from my apiary: I was intending to apply Apiguard in my Sandwich apiary on Sunday, but as ever in beekeeping, that plan needed rapid adjustment on contact with the bees. One colony had ripened/filled two supers that were un-harvestable in early August, so I had to make arrangements to take that off before the thymol went on. I also didn't pay close enough attention to Dougal's notes in the August newsletter about reducing entrances against wasp robbing. One of my weak colonies was under fierce attack from the local wasp population, and unfortunately will not survive. I've posted a gruesome video of a cloud of wasps trying to get into the closed-up colony on our Facebook page. I spent the rest of my apiary time checking that the remaining colonies were wasp-tight, applying some parcel tape around seams where the wood was warped.

The best defence against wasps is having a strong colony, and we will be applying these principles at our upcoming meeting on

Saturday. In the last apiary meeting of the year, we'll be uniting some weak colonies, and removing queens heading colonies of poor temperament. We will also be replacing Apiguard trays. More information about the meeting on p2.

Apiary Meeting
Winter Preparations
Palmsted Wood
Bekesbourne
Sat 7th September
2.00-4.00pm
Details on p2

Just a quick reminder that if you want to sit any BBKA module examinations in November, you have until the end of September to apply. When you pass, KBKA will refund the exam fees!

Later in September, we'll be at the East Kent Ploughing Match,

on 25th September at West Court Farm, Shepherdswell. This popular annual event attracts between 3,000 and 4,500 people each year from the agricultural community as well as all walks of life. The event not only draws tough competition between modern, old and horse drawn ploughs, but is a fantastic outing and educational opportunity.

We partner with other local associations to run a beekeeping stall, where we sell honey and talk about bees. Look out for an email with more details next week.
Adrian

CBKA Officers

Chairman:

Michael Roberts
1 Orchard Street
Canterbury CT2 8AP
07874 631890

Treasurer and Membership:

Joan McAllister
42 Canterbury Road
Lydden, Dover
CT15 7ER
07824 668042

Secretary & Newsletter Editor:

Adrian Davis
24 The Grove
Deal CT14 9TL
07816 975286

Committee Members

Stuart Andrews
Julian Audsley ([courses](#))
David Cockburn
Simon Daniell
Dougal Hendry
Maggie McKenzie
Janet McDonald
Magdalene Mei Halkes
Michael Roberts
Jan Soetaert

The easiest way to contact us is via email using the links above, but you can also use the contacts page on the website.

Contact [Newsletter Editor](#) to contribute articles

SEPTEMBER 2019

DATES FOR DIARY: yearbook at <http://canterburybeekeepers.org.uk/calendar/cbka-list/>

2019

Sat Sep 7

Wed Sep 25

Mon Sep 30

Wed Oct 2

Wed Oct 17

Oct 19-20

Sat Oct 19

Oct 24-26

Wed Nov 6

Sat Nov 30

Apiary Meeting – Bekesbourne. Winter preparations

East Kent Ploughing Match, WEST COURT FARM, SHEPHERDSWELL, CT15 5PZ <https://www.ekpma.co.uk/event>

Complete applications to sit BBKA module exams (9 Nov 2019)

Indoor branch meeting – Honey Tasting, 7.30-9.30pm Whitefriars management suite

Committee meeting, 7.30-9.30pm, Duke of Cumberland, Barham

Meet the public – Apple Festival at Brogdale

DDBKA Honey Show, Shepherdswell Village Hall

National Honey Show, Sandown Park, Esher

Indoor branch meeting – AGM, and a talk about training beekeepers in Zambia by Stuart Andrews, , 7.30-9.30pm Whitefriars management suite

Canterbury Beekeepers Christmas party, 7-10pm, St Marys Hall, Harbledown

You can get our calendar, either as a google calendar (cantbees@gmail.com), or for other programmes using this URL: <https://calendar.google.com/calendar/ical/cantbees%40gmail.com/public/basic.ics>

APIARY MEETING

At Palmsted Wood

Saturday 7 September, 2-4pm

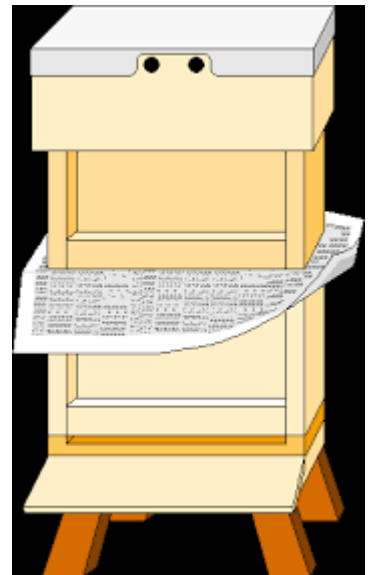
Palmsted Wood, Bekesbourne Lane, Bekesbourne CT4 5DX

We will be getting the hives ready for winter – with the honey taken off, August and September are critical times to ensure that the bees are healthy, and it's a good time to unite weaker colonies so that they can make the best of late summer foraging opportunities. A varroa treatment is typically applied in August/early September so that brood raised on the late summer flows (typically ivy) are exposed to less varroa-transmitted viruses - in particular deformed wing virus. Healthier brood now means healthier "winter bees", which have to live through the winter and forage in Spring to reboot the colony.

Normal apiary hygiene rules apply – so please bring clean bee-suits, clean disposable gloves (no leather gloves), and wellington boots. If you need to borrow a beesuit, please email committee@canterburybeekeepers.org.uk, so we can make sure to have an appropriate number of suits available.

MAP: <https://goo.gl/maps/EA4SF5ugxTq>

The map marks the entrance to the wood – if you are coming down Bekesbourne Lane from the Canterbury direction, you will pass a 7-bar metal gate on the left, which is opposite a track. This is about 100yds from the main entrance, also on the left. The gate on the LHS of this driveway will be open for you to drive through. If you get to Highfield Care Home, you've missed the entrance! If you are arriving from the south/Patrixbourne, then it's 50yds past Highfield Care Home, on your right. Drive along the track for about 100 yds and park on the left. As a courtesy to our hosts, Sally and Chris, and to their neighbours, please make sure that you park inside the gate, so that no obstruction of the entrance place takes place.





BRANCH NEWS

Whitfriars Bee Day



We've just completed another meet-the-public event on Saturday 31 August, and whilst the sales figures are not yet available, reports were of a good day, with plenty of members offering their time and honey for sale.

Here are some pictures courtesy of Martin Neame and Magdalene Mei Halkes. As usual, these events do not happen without the time and energy of volunteers, so thanks to Peter, Magdalene, Martin, David, Lisa, Janet, Stuart, Andy, Joan, Norman, Dougal, and Adrian for their support.

Indoor Meeting, October

The first indoor meeting of the Winter season will be a honey tasting evening. This is intended as an informal and informative opportunity to sample the wide variety of honey gathered over the season. If you have extracted any honey please bring a jar (or a section of comb). We will take time tasting all the honey and commenting.

It would be good also to see, taste, drink other things which people have been making with wax or honey so if you have made drinks, or cakes, or candles, or wax cloths or anything else with your bee products, or any crafts which are bee related then please do bring along. If you could label each product with your name, and description of the item then that would be wonderful! The more contributions we have the better. If bringing something to taste or drink please let me know so

that I can provide suitable implements for everyone. Janet McDonald

Neighbourhood groups

A number of neighbourhood groups have been established over the years, to give support and connections between beekeepers living near to each other. If you are a new beekeeper this is a great way to get to know others living nearby and to ask questions and have some help if needed. Please be in touch with the contact person if you would like to be part of such a group.

There are also considerable areas where a group has not been set up but there are beekeepers, so if you would like to start one or perhaps have already begun such a network please do let us know.

At the moment there are groups in:

Canterbury - Magdalene Mei Halkes
(magdalene.chau@gmail.com)

Womenswold (and surrounding villages) - Contact Joan McAllister (treasurer.cantbees@gmail.com) or Julian Audsley (julian100@btinternet.com)

Folkestone area - Debbie Burton
(burtsons@live.co.uk) or Dougal Hendry
(wdhendry@gmail.com)

Grove Ferry/ Preston/ Wingham - Janet McDonald
(janet.mcdonald@btinternet.com)

Deal - Adrian Davis
(secretary@canterburybeekeepers.org.uk)



CANTERBURY BEEKEEPERS GOOGLE CALENDAR FOR IPHONE & ANDROID

Dougal Hendry

Our Secretary publishes a 'Diary' of club events as a "Google Calendar" so that everyone can get notice of events (and immediate updates on any changes) in a convenient, no-fuss form.

After you have set up the linkage to the calendar, you can choose (and change whenever you like) whether or not you want to be shown club events mixed with your own, and whether or not you want automatic notification of upcoming club events. I find it incredibly useful, and I'm sure others would too. My concern is that not every member might know this amazing facility is available to them, and that some of those who do know about it might not understand how to access it. It isn't difficult, but there are a few things to take care of.

While it is published through Google, it is available as an ordinary webpage, and on smartphones and tablets whether they are running Google's Android or Apple's iOS.

For Apple's iPhone and iPads (iOS 12.4.1 - current version)

It is unsurprisingly pretty simple to do, but rather surprisingly hard to spot exactly what you need to do.



It only involves copying a string of gobbledygook and pasting it into the right place! Here is the gobbledygook -

<https://calendar.google.com/calendar/ical/cantbees%40gmail.com/public/basic.ics>

Once you have copied that (long press, select all, copy), then open Settings and scroll down to tap on "Passwords and Accounts". In that panel there is a section headed "Accounts" - tap "Add Account". This brings up a panel starting with "iCloud" - you need to tap "Other" (at the bottom of the list). That brings up a page with 3 panels, the bottom one being "Calendars". Tap on "Add Subscribed Calendar" which brings up a "Subscription" panel with a prompt to enter something alongside where it says "Server" - This is where you need to Paste (long press, paste) that gobbledygook! The hard part was just finding where it had to go ...

Now, if you go into the Calendar App, and tap "Calendars" (bottom centre) you should find "cantbees@gmail.com" under "Subscribed". Tapping on the tick allows you to turn on and off the display of Canterbury events in your Calendar, while tapping the circled i brings up a panel that allows you to choose a colour for Canterbury events and

whether or not you want to enable or prevent "Notifications" of Canterbury Calendar events (you can adjust what form of notifications Calendar gives you in Settings, under Notifications, then Calendar. In the Calendar, with notifications enabled, if you tap on an event, you can then set the advance notice for an automatic reminder about that event Not too bad, was it?

For Android Smartphones and Tablets (plain Android 9 - current version)



The 'gotcha' that Google throw in is that you can't link to a shared Calendar directly from your phone or tablet.

You do that through the Google website! (And it won't even let you get to the right bit of the website from your phone.)

Once you understand that, it is really very simple. So, you need to use a computer (desktop or laptop, Mac, PC, Linux, whatever) to Log In to your Google Account, to tell it to add Canterbury's Calendar.

Go to google.com and check at top right if you are signed-in to Google, (sign-in if you aren't - it's just your Gmail address and password, which you'll have if you have an Android phone!)

Then click on the '3x3 dots' button up there at top right to bring up the menu of Google Apps - click on Calendar.

Once Calendar is open, go to the left hand side and click on the '+' sign next to Other Calendars, then select 'Subscribe to Calendar' from the menu that appears.

That takes you to a screen with an invitation to enter the name of the Calendar you want to add - in this case it is cantbees@gmail.com - do that and you are essentially there.

The Canterbury Calendar should now show up on your phone.

But there is something else worth checking. Go to the (Google) Calendar App, tap on the "3 lines" (menu) button at top left, and scroll down to the bottom of the menu to tap on "Settings". In the settings list tap on cantbees@gmail.com to get to the settings specific to that Calendar (you can choose the colour, etc). The important thing is that "Sync" is turned on ...! Of course you can customise alerts and notifications in the normal Android style. Personally, I have the Google Calendar "Schedule" widget on one of my Home screens so that I can see at a glance what my upcoming time commitments might be - Apple doesn't have anything directly equivalent, and I think it is a fantastic facility.

Whichever type of phone or tablet you happen to use, please give the Club Calendar a try. It is neat, useful and Adrian keeps it bang up-to-date with the latest changes. Please don't let his work go to waste!

<https://www.bbka.org.uk/2019-asian-hornet-week/>

ASIAN HORNET WEEK

September 9th-15th 2019

I could be coming your way – are you ready?



copyright: Giles San Martin

We are asking everyone to be vigilant in looking out for this alien species, the Asian Hornet, *Vespa velutina*. This hornet could decimate our pollinators including our honey bees, it is important to have everyone actively looking for it.

Now is the time for trapping and spending a little more time watching to see if hornets are hawking your hives in your apiary, put an hour aside to watch each day for hornets during Asian Hornet week.

SEE IT, SNAP IT, SEND IT



copyright: Jean Haxaire

Asian hornets are rather like large black wasps with a single yellow band, orange face and yellow tipped legs. If you see it Report it to the [Non-Native Species Secretariat](http://www.nonnativespecies.org/)(NNS) <http://www.nonnativespecies.org/>

If possible take a photo or video and send it with the specimen, if it is dead, to the NNS.

Here is a link to a page on the BBKA website where we have put the pdf for an Asian Hornet banner we designed in the office and have used at Shows.

<https://www.bbka.org.uk/blog/asian-hornet-week-2019-blog-post>

You can use [this pdf](#) to have your own banner printed by downloading it to your computer and then uploading it to this website. Banners are in the region of £30/40 to pounds -

<https://www.solopress.com/roller-banners/> (other websites are available!)

We have also attached the latest Asian hornet poster from the Government which you can display anywhere you think might be useful in your locality (local shops/ allotment site / work notice boards



Asian Hornet

Alert!

Report sightings of this species:

- with the iPhone and Android recording app: **Asian Hornet Watch**
- online at: www.nonnativespecies.org/alerts/asianhornet
- by email: alertnonnative@ceh.ac.uk

Species Description

Scientific name: *Vespa velutina*

AKA: Yellow-legged Hornet

Native to: Asia

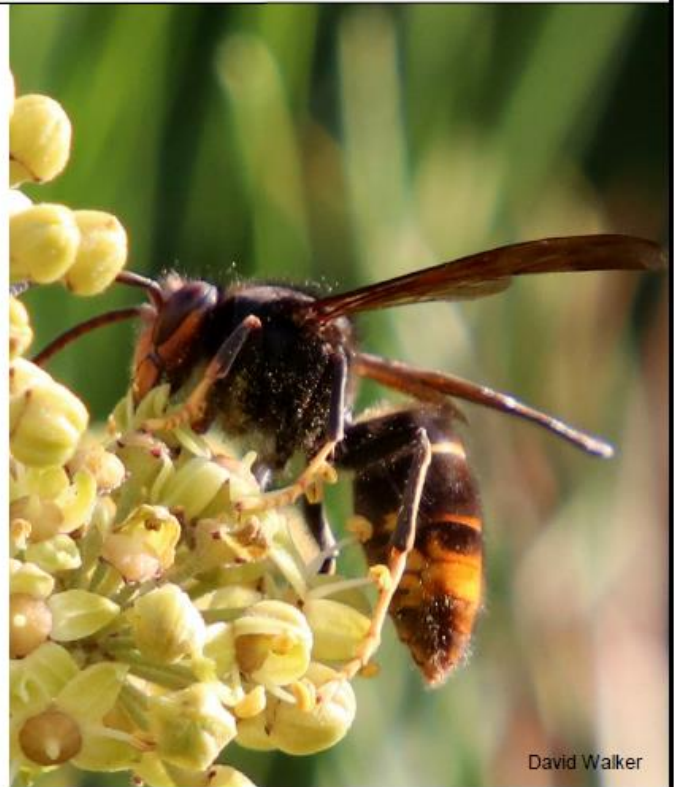
Habitat: Nests usually high in trees and man made structures, sometimes closer to the ground; hunts honey bees, other insects and also feeds on fruit and flowers.

Not easily confused with any other species. Dark brown or black velvety body. Characteristically dark abdomen and yellow tipped legs. Smaller than the native European Hornet.

Introduced to France in 2004 where it has spread rapidly. A number of sightings have been recorded in the UK since 2016. High possibility of introduction through, for example, soil associated with imported plants, cut flowers, fruit, garden items (furniture, plant pots), freight containers, in vehicles, or in/on untreated timber. The possibility that it could fly across the Channel has not been ruled out.

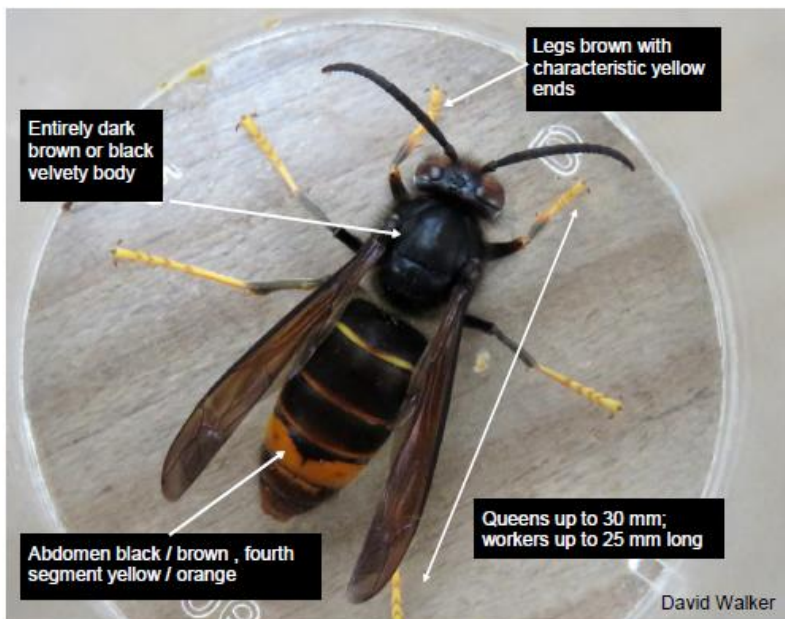
A highly aggressive predator of native insects. Poses a significant threat to honey bees and other pollinators.

Do not disturb an active nest. Members of the public who suspect they have found an Asian Hornet should report it with a photo using the details provided in the red box at the top of this ID sheet.



David Walker

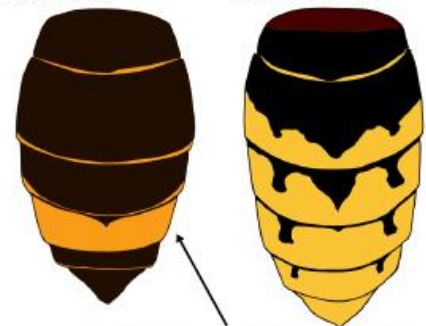
Key ID Features



David Walker

Asian Hornet

European Hornet



Asian Hornet abdomen is almost entirely dark except for 4th abdominal segment.



J. Haxaire

Asian hornet (*Vespa velutina*) for comparison

- Queen up to 30mm long, worker up to 25mm long
- Legs yellow at the ends
- Dark brown / black abdomen with a yellow / orange band on 4th segment
- Head dark from above, orange from front
- Dark coloured antennae
- Entirely black velvety thorax
- Never active at night

Actual size



Q. Rome

Similar Species

European hornet (*Vespa crabro*)

- Queen up to 35mm long, worker up to 30mm long
- Legs brown at the ends
- Yellow abdomen marked with brown on the upper part, not banded
- Head yellow from above, yellow from front
- Yellow antennae
- Thorax black with extensive brown markings
- May be active at night

Actual size



Roger Burgess

Mia Tonge, National Bee Unit

Giant woodwasp (*Urocerus gigas*)

- Larger than Asian hornet, female up to 45mm long
- Legs yellow
- Distinctive yellow and black banded abdomen
- Long cylindrical body unlike Asian hornet which has an obvious waist
- Long yellow antennae
- Female has an obvious long sting-like appendage (ovipositor) which it uses to lay eggs in trees

Actual size



Q. Rome

Hornet mimic hoverfly (*Volucella zonaria*)

- Abdomen has more yellow stripes than Asian hornet
- Legs darker than Asian hornets
- Only one pair of wings (hornets and wasps have two pairs)
- Large, globular eyes

Actual size



Didier Descouens

Alvesgaspar

Median wasp (*Dolichovespula media*)

- More extensive yellow and orange colouration on abdominal segments than Asian hornet
- Yellow markings on thorax unlike Asian hornet

Actual size



Q. Rome

Field Signs

Active April-November (peak August/September). Mated queens over winter singly or in groups, in various natural and man-made harbourages – underneath tree bark in cavities left by beetle larvae, in soil, on ceramic plant pots – potentially any small, well-insulated refuge. Makes very large nests in tall trees in urban and rural areas, but avoids pure stands of conifers. Will use man made structures (garages, sheds etc.) as nesting sites.



For more information visit:

www.nonnativespecies.org
www.nationalbeeunit.com

Report sightings of this species:

Alert!

- with the iPhone and Android recording app: **Asian Hornet Watch**
- online at: www.nonnativespecies.org/alerts/asianhornet
- by email: alertnonnative@ceh.ac.uk



Mission Statement:

- To further and promote the craft of beekeeping
- To advance the education of the public in the importance of bees in the environment.

The unified voice of British Beekeeping

POSITIVE THINKING NEWSLETTER NO 24 – AUGUST 2019

From Margaret Wilson, Chair of BBKA

Dear Members,

It is August already and I do not know where this year has gone, we have had both heat waves and floods last month so I hope that everyone's bees have been kept safe, out of the heat and floodwater.

On Monday the 5th August the Executive Committee met to go through next year's budgets, it is always difficult trying to guess which organisation will be increasing their charges and managing that within the anticipated income. Will the membership increase, decrease or stay as it is, sometimes a crystal ball would be good to help with this however we do this every year and the past few years we feel that we have managed to keep the reigns tight on expenditure so here is hoping that we can do the same next year.

One item that I take responsibility for is the 'Third Party' Insurance for our members, in my first year as a Trustee I managed to get a rather large reduction on previous years costs and thankfully the quotation for 2020 will not show an increase in these costs. Can I also mention at this point that the third party insurance does not cover your equipment, that is available through Buckland Harvester Insurance, (www.beekeepersinsurance.co.uk)

We also have a link on our web site for it and you can insure up to £5,000.00 of equipment for just £12.00 per year. Your Branch Apiary would also benefit from that type of insurance as well. For the peace of mind this is very little outlay.

This year we have changed our Auditors, we had asked for quotations ready for the budgets but Baldwin's had doubled their costs so we went to the market place, interviewed other firms and have selected Harrison Beale & Owen who are local to Stoneleigh with a much more competitive rate for the audit, they will also be available for advice as and when it is needed.

I would like to add a small item to this newsletter which is nothing to do with the BBKA, but I think is very interesting, my neighbour is always trying new things in his greenhouse and garden and his latest project was to use Honey to get cuttings of shrubs and bushes to grow well. He had heard that if you take a hardwood cutting from a bush and dip the end in Honey and then push it into a potato and bury this into compost or soil then the cutting will grow quite strongly, he did take out all the 'eyes' in the potato to prevent that from growing but every cutting taken that way has been successful. Yet again another fantastic result for beekeepers and Honey. Now back to the BBKA.

We have appointed the design team for the Apiary at Stoneleigh, Isola Garden Design Ltd, they are situated in a building to the rear of our offices and their quotation was by far the best. I believe they have

taken into account that future clients will be able to see the results of their work when they visit their offices as the apiary is just a couple of minutes away from their own establishment. In some ways they had to make sure to get the contract otherwise their future clients would wonder why not as they are so close to us.

I recently wrote about the fantastic Schools who want to be our 'Beacon Schools' so that they can help other schools to start beekeeping, sharing their experience and knowledge, the two schools are Ashbrow and Heron Hill. Both Stephen Barnes and Anne Rowberry have agreed to develop a beacon school criteria for other schools. Also at the last committee meeting it was agreed to offer a donation of £500 to these two schools in order that they can provide transport for their pupils to come to the Spring Convention. It is so important that we encourage youngsters to learn about beekeeping as they will be part of the future beekeepers of the UK.

Finally I have been asked to circulate the information below, I hope you find it interesting.

For the sixth consecutive year, we are organizing the European Bee Award. For this 2019 edition, we are again looking for individuals, farmers, landowners, research institutes, private or public organizations with an innovative project that aims to protect pollinators and help on reducing the impact of farming operations on bees.

Two categories are rewarded with a €4,000 prize and one with a diploma of recognition. You can find more information on the following link, as well as the application forms:

<http://www.europeanlandowners.org/awards/bee-award>

Please do not hesitate to contact me if you are interested or have any questions.

Kind regards,

Athéna Lefebvre, Award Coordinator



Food and Agriculture Organization
of the United Nations

Dear Bee Health Advisory Forum (BHAF) members and colleagues,

Please see below details forwarded by DEFRA's Bee Health

Policy team from the UN's Food and Agriculture Organisation about beekeeping surveys, which you may wish to make known to your members/colleagues? Further information and the surveys can be accessed using this link:-

<http://www.fao.org/teca/forum/beekeeping/en/>

Surveys on good beekeeping practices and proper use of medicines at the apiary level

The risk of residues of veterinary medicines in honeybee products and the risk of developing antimicrobial resistance at the apiary level motivated FAO, under the technical supervision of the International Federation of Beekeepers' Associations (Apimondia) and Istituto Zooprofilattico Sperimentale del Lazio e della Toscana (IZSLT), to launch 3 surveys aiming to assess:

- - beekeepers' knowledge on the main honey bee diseases (Nosema, AFB and EFB and Varroa);
- - how beekeepers prevent the main honeybee diseases by adopting good practices;
- - beekeeper's knowledge on the risk to induce antimicrobial resistance as a consequence of the overuse or misuse of antimicrobial products.

It will take approximately 5 to 10 minutes to complete each survey and answers are anonymous. Honest replies will contribute to a realistic assessment of beekeepers' knowledge and help governments to respond to their real needs.

The results of the surveys will be used to help governments and industry in providing adequate support to the beekeeping sector in order to fight the spread of the diseases and prevent antimicrobial resistance in beekeeping. The results of the surveys will be shared on Technologies and Practices for Small Agricultural Producers (TECA) through a moderated discussion, which will be organized on TECA's Forum by the end of 2019.

