



CANTERBURY BEEKEEPERS



A branch of Kent Beekeepers Association

EDITOR'S NOTES

In the informal discussions between members on our Facebook group, there's been increasing excitement, impatience and a little bewilderment at the behaviour of swarms through the month of May. For those of you new to our craft, welcome to the excitement of a dry Spring! Some people have got themselves sorted out with new colonies, and some of you have probably lost swarms too. It's all part of the fun, but as beekeepers we should be trying to learn how to work with and manage the swarming instinct, rather than just going with the flow.

There's a lot of activity involving bees over the next couple of months, so I have prepared a rather long newsletter, with information about all the local shows, events and garden parties that might get you out in the summer weather.

In our branch apiary at Palmsted, things have moved on quickly since our meeting there in early May. The split that was reduced to a single sealed queen cell on 11th May has just come into lay – reminding us that new queens can take at least 3-4 weeks to

begin egg-laying. Queen Greta has now been marked, as we are sure she has completed mating flights.

Colonies that seemed approachable in early Spring will be revealing their

full personality, now that they are rammed with older, flying bees. Unfortunately, we have a very jumpy, following colony around Queen Regina, so it would be great if we can replace her with a new queen. As indicated in the Apiary Meeting notice, Jan is

raising queens, and will be showing us this activity at our apiary meeting on Saturday. Jan will hopefully reserve his best new 2019 queen for the teaching apiary!

Julian has been leading a number of beekeepers through the syllabus of the Basic Assessment in beekeeping, and we hope that these studious beekeepers will find our Branch Apiary bees welcoming, when the students demonstrate their skills in June.

Don't forget to sign up for our Bee Safari at the end of June, or volunteer to help out at the Strawberry Fair – see page 3 for more details. Adrian

Apiary Meeting

Queen rearing

Bigbury Orchard

Nr Harbledown

Sat 1st June

2.00-4.00pm

Details on p2

CBKA Officers

Chairman:

Michael Roberts

1 Orchard Street

Canterbury CT2 8AP

07874 631890

Treasurer and Membership:

Joan McAllister

42 Canterbury Road

Lydden, Dover

CT15 7ER

07824 668042

Secretary & Newsletter Editor:

Adrian Davis

24 The Grove

Deal CT14 9TL

07816 975286

Committee Members

Stuart Andrews

Julian Audsley ([courses](#))

David Cockburn

Simon Daniell

Dougal Hendry

Maggie McKenzie

Janet McDonald

Magdalene Mei Halkes

Michael Roberts

Jan Soetaert

The easiest way to contact us is via email using the links above, but you can also use the contacts page on the website.

Contact [Newsletter Editor](#) to contribute articles

JUNE 2019

DATES FOR DIARY: yearbook at <http://canterburybeekeepers.org.uk/calendar/cbka-list/>

2019

Sat June 01

Sat June 15

Sun June 16

Sat June 29th

July 5-7

Sun July 21

Sat July 27

Sat Aug 24

Sat Aug 31

Sat Sep 7

Wed Sep 25

Mon Sep 30

Wed Oct 2

Oct 19-20

Apiary meeting, Jan's place. Queen rearing preparations

Kent Beekeepers Association AGM, Lenham Community Centre, 10am

Meet the public – Strawberry Fair at Brogdale

Apiary Meeting – Safari with the Bee Inspector

Bees and Honey stand (KBKA) at the Kent Show, Detling Showground

Meet the public – Cherry Festival at Brogdale

Apiary Meeting – Honey extraction and preparation for shows at Debbie's place, Stanford North

Complete applications for BBKA Microscopy Certificate (23/24 Nov 2019)

Meet the public – BeeDay at Whitefriars

Apiary Meeting – Bekesbourne. Winter preparations

East Kent Ploughing Match, Shepherdswell

Complete applications to sit BBKA module exams (9 Nov 2019)

Indoor branch meeting

Meet the public – Apple Festival at Brogdale

You can get our calendar, either as a google calendar (cantbees@gmail.com), or for other programmes using this URL: <https://calendar.google.com/calendar/ical/cantbees%40gmail.com/public/basic.ics>

APIARY MEETING

Jan Soetaert's apiary, Harbledown

Saturday 2nd June, 2-4pm

Our next branch apiary meeting will be on Saturday, 2-4pm at Jan's apiary. Jan is planning to show us some of the different ways that Queen Cells can be produced, harvested and developed. Beekeepers may talk darkly of the mysteries of the Miller method, Cupkits and Apideas, but Jan will show you that these things are easily adapted into your own beekeeping. He also has some colonies that demonstrate why deliberate replacement of queens is a useful skill that we should all acquire.

Normal apiary hygiene rules apply – so please bring clean bee-suits, clean disposable gloves (no leather gloves), and wellington boots. If you need to borrow a beesuit, please email secretary@beekeepers.org.uk, so we can make sure to have an appropriate number of suits available.

<https://goo.gl/maps/CrsRKCQs8rq> (51.276946, 1.029846)



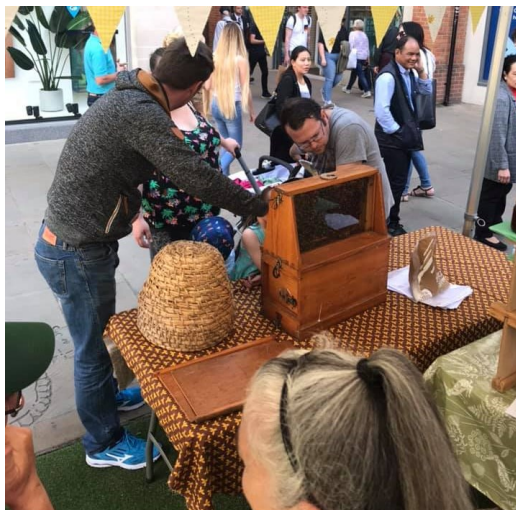
The apiary entrance is on Bigbury Road, between Harbledown and Chartham Hatch. If you are coming from the Harbledown direction, there's a big metal gate on the left with the sign "Bigbury Orchard". Across the road there is a wooden fence with the sign of the goat farmer. Please park cars on hard bit behind the gate. There's plenty of space for cars. The hives are straight ahead across the field.



BRANCH NEWS

BeeDay

The pictures on this page are from our first meet the public event last weekend (25th May) and are kindly provided by Heather Colthart. Jan Soetaert reported a busy day talking and selling honey. We sold a little over £500 of honey and cut comb. We sold equal amounts of 1lb and smaller bottles (8 or 12 oz). Honey from our Bekesbourne apiary was matched in popularity with honey from other places, and Jan commented that our ability to showcase the variety of flavours of honey from apiaries around Canterbury is one of the things the public most appreciates.



We will soon be going to Brogdale for the Strawberry Fair on 16th June, so if you can spare half-a-dozen jars (and a taster), let's wow people with the variety!! We will also need volunteers to help out at the Strawberry Fair (in exchange, you get free entrance!) so sign up [here](#)

Bee Safari at end of June

Most years we organize a Bee safari with our seasonal bee inspector. This year is no exception, and Kay Wreford will be visiting our area on 29th June. We strongly encourage any members who haven't had Kay visit previously to take advantage – Kay will check the health of your bees, and we invite branch members in the vicinity to "tag along", as it's a great learning opportunity for us all, as Kay is a very experienced, wise beekeeper/inspector. We are limited in the number of apiaries she can visit, so book early to avoid disappointment! Just let Adrian know by [email](#).

Swarms

Whilst things didn't really get going until well into May, there do seem now to be plenty of calls reporting swarms. It is

probably a good time to remind people about the branch arrangements for swarm collection. We hope that many members will be prepared to help out in removing swarms from places where they are not wanted, and to this end we have a list of collectors/receivers. We know that not everyone wants to retain swarms, and we hope that these can be passed on to newbees and people who had a bad winter, or problems with queens. The lists can be found [here](#). We do ask that people keep the lists up-to-date – let the secretary know if your need for swarms has been fulfilled, or if you can't collect.

Folks sometimes ask for guidance on what charges should be made. A swarm of unknown provenance will take time to assess for diseases, fecundity etc, and therefore has a modest value to a beekeeper. Where swarms are removed, we should ask for a donation to the branch to help fund the running costs of our website and other contact mechanisms. £25 would be considered appropriate, on top of any incidental costs (petrol, parking etc).

Kent County Show

The main event of the summer for our parent body, the Kent Beekeepers Association, is the Bee and Honey Show at the County Show at Detling on 5-7 July. KBKA are always interested to hear from people who can help out running the stand, or indeed entering hive products in the Honey Show section. There's a lot more detail about being a steward, which will earn you free entry to the County Show, and how to enter the Honey Show available from the organizer, Bob Smith. I've posted all the information on our website, as there are 4 separate documents that might be relevant. To find out how to get involved point your browser at [this link](#).





ROSIE'S ART

By Janet McDonald

I was thrilled by my Mothers' Day present this year of a stunning framed bee picture. Even more delightful is that it was made by Rosie Turner-Dore, a member of Canterbury Beekeepers. Rosie's family were the first people to introduce me to bees when I grew interested and Rosie makes and sells some beautiful bee



products which can be bought from her Etsy site: <https://www.etsy.com/uk/shop/RosieDoreShop> or her website <https://www.rosiedore.com/>

BOOK REVIEWS

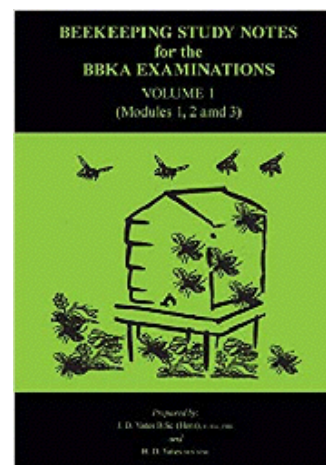
Janet McDonald May 2019

Expertise in beekeeping (I'm saying to myself after 5 years of keeping bees) develops as much from learning from mistakes made, as from dealing well with all the decisions to be made. Perhaps this is just me though and others manage to perfectly execute all they were taught in classes? I have learnt much the last few seasons but mostly through realising after losing bees, in swarms, or in winter, what I have done wrong and putting the lessons learned into practice the following year.

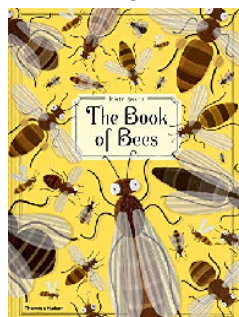
Magdalene always reminds us to learn from the bees; this has been good advice - and has made me more determined to improve my beekeeping skills. For this reason, I thought it would be a good idea to embark on taking the BBKA module exams to enlarge on my knowledge on the subject.

The 'Basic Assessment' practical exam can be taken after 2 years of having bees and is well worth attempting - information about extra tuition for this exam from the club has been circulated. Once you've kept bees for over 5 years there are then a selection of practical exams you can take.

However, there are also written exam modules which you can enter and take every 6 months on various subjects. The topics covered offer a great way to expand your knowledge and read widely on a range of subjects from managing bee colonies, to bee biology, to bee diseases. The advice is to read as widely as you can for these exams, but the **"Beekeeping Study Notes"** by J.D Yates and B.D Yates offer a good oversight and depth to the syllabus for modules 1 -3.



I learnt this week that I had failed module 3 - perhaps not the best selling point in encouraging others to take these exams - but like the practical side of beekeeping I am learning very much more through my mistakes than through my successes - and so am determined to re enter and pass next time, and would encourage others to give it a go too! Information on all exams is on the BBKA site. There are Facebook sites for study groups for those who find FB helpful, and BBKA offers correspondence courses if you'd like further help.



If you've recently failed your BBKA module exam then **"The Book of Bees"** is the perfect book! Actually, I bought this book for my young great-nephews, but after reading it myself decided to keep it in the house for any visitors wanting to know more about the bees in the garden and also because I love it so much myself. It's a truly wonderful book - amazing illustrations to information about the history of bees and beekeeping to the behaviour of bees and colonies. A wonderful present for children (of any age!) and to have on hand as a good read.

Bees & Honey 2019



at the...



Ardingly, West Sussex RH17 6TL

COMPETITION SHOW
BEES & BEEKEEPING DISPLAYS
BEEKEEPING EQUIPMENT SALES
SALES OF HONEY & HIVE PRODUCTS
TRAINING & MEMBERSHIP INFORMATION
OBSERVATION HIVE & DEMONSTRATIONS

.....

An annual event providing a unique opportunity for Associations and their beekeeping members throughout the South of England to participate; whether in competition, or in sharing passions for beekeeping with a public always asking "how are the bees?"

Cash prizes for each class.

Trophies awarded to the winner of the "Bounty from the Hive" class and for "Most Points in Honey Classes".

BBKA Certificate of Merit awarded for The Best Exhibit in the Honey Classes.

Any Exhibitor submitting 5 or more Show Entries will receive a **FREE Day Ticket** for any one day of the Show.

Other Exhibitors may purchase an **Exhibitor Day Ticket (£12*)** for any one day of the show.

Full price Day Tickets are £21.*
** prices to be confirmed*

Get together with your fellow members to register entries on behalf of your BKA.

Be smart and arrange for one person to deliver all the entries from your Division or Association.

Honey Show Schedules and

Honey Entry Forms will be available to view and download from the **South of England Show** website by January 2019

Entries will be accepted up to the 1st June 2019

Help as a Show Steward

for a day (or more) with the live demonstrations, observation hives, honey sales and information stands.

Contact:-
chief.steward@deodar.org.uk

Promote your Association or Division with leaflets or notices about Membership, Training and Taster Days to display on the Info. Stand.

Contact:-
beesandhoneyinfo@gmail.com

Visit us at
<http://www.seas.org.uk/info/competing/competing-south-england-show/bees-honey/>

12 JUNE 2019

Bee Garden Party

IN SUPPORT OF



Bees for Development

⇨ BOOK YOUR TICKETS NOW



THE BEE GARDEN PARTY

12 June 2019 | 4.30 PM - 8.00 PM

Marlborough House Gardens, London, SW1Y 5HX

We invite you to the social highlight of the Bee Season: Bees for Development's biennial Bee Garden Party on 12 June 2019 in the private gardens of Marlborough House in London's Mall, by kind permission of HM The Queen.

Hosted by Martha Kearney
Auction with Bill Turnbull

BUY TICKETS



National Honey Show Spring Newsletter 2019

This year's National Honey Show will be held, once more, at our fantastic venue: Sandown Park, Esher, from Thursday 24th to Saturday 26th October 2019.

The lecture programme is now complete, though as always, subject to last minute contingencies, so do check lectures and times on the day. Topics planned for this year's lectures include: **Ralph Büchler** on varroa resistance, varroa sustainable management, environmental adaptation and selection, and the link of honey bee complex biology to its health; **John Donoghue** on managing bees for the honey crop; **Mary Montaut** on bees & plants; **Shona Blair** on honey against superbugs; **Jo Widdicombe** on bee improvement; **John Chambers** on basic honey bee genetics; **Irene Power** on efficient beekeeping and Simon Rees on the Langstroth story, and how bees fly.

The lecture programme details can be found at:

<http://www.honeyshow.co.uk/lectures-and-workshops.php>

If you have a timetable clash, you can catch up with any of the main programme lectures as videos on The National Honey Show YouTube channel in the new year, courtesy of our generous sponsors. Last year's lectures are all uploaded now, and previous years' still available as well.

The younger generation are the future, for beekeeping as well as all else, and we love to encourage the next generation to take part in all our beekeeping events. It would be great to see more youngsters at, and taking part in, The National Honey Show.

The National Honey Show is held at the end of October, which for many areas, is half term week. We usually have some activities for children and this year will there will be quizzes plus some drawing and colouring activities on stands throughout the whole show, with our main day for children's activities on the Saturday. There will be a dedicated area with candle rolling ('big' kids are allowed, too) and other activities on offer for your children and maybe grandchildren to enjoy.

You may be aware the [International Centre for Young Beekeepers organises a meeting: The International Meeting of Young Beekeepers \(IMYB\)](http://icyb.cz/) <http://icyb.cz/>. This is an annual meeting for young people interested in beekeeping. The event started in 2010 as an initiative from the Czech Republic and has become the largest international meeting for young beekeepers worldwide. It is designed for participants aged 12 to 17 who compare knowledge and skills, establish new friendships and find out more about other countries and cultures during the four day meeting. There will

Show next page (Right Arrow)

be opportunities to talk to some of the young beekeepers who have attended the IMYB meetings during this year's National Honey Show.

As well as the usual National Honey Show leaflet, we are producing a special leaflet highlighting activities on offer for children and detailing the variety of competitive entry classes for juniors. We'd love to see more youngsters at the show, and entries in these classes.

Raffle For this year's National Honey Show raffle as well as having four cash prizes to be won, we have also four gift vouchers from traders at The National Honey Show - to be redeemed from the respective companies. The draw for all the prizes will take place on Saturday 26th October, just before the prize giving for show entries.

Entry Classes We have three new entry classes for 2019:

Braggot. (in the beer section)

2 bottles, minimum 330ml, not commercially available. Honey must be an ingredient.

Branch or Association Newsletter. Three latest editions of a branch or association newsletter, to be submitted in electronic format.

Beeswax Wrap, two matching pieces. Each 30cm square. One piece will be used to wrap a food item which will be supplied by the Show on Wednesday. Exhibits must therefore be entered on the Wednesday.

There's still time to organise a coach or minibus outing to the Show. There's plenty of interest at The Show and nearby for beekeepers and gardening clubs (Windsor, Wisley, Kew and Hampton Court). Sandown Park has ample free parking.

Do please request National Honey Show leaflets for distribution to your local association and to take to your local and county shows. Please contact us publicity@honeyshow.co.uk to let us know how many of each leaflet you need (the usual, and/or that aimed at the younger generation), the address to send them, and we will post them to you.

Digital copies can be found at <http://www.honeyshow.co.uk/publicity.php>

Look forward to seeing you, and lots of enterprising young beekeepers, at this year's show. We hope you'll enjoy it as much as we do.



Positive Thinking No. 21

May, 2019



Mission Statement:

- To further and promote the craft of beekeeping
- To advance the education of the public in the importance of bees in the environment.

The unified voice of British Beekeeping

From Margaret Wilson, BBKA Chair

Training for Volunteers and Trustees,

After the Spring Convention it was brought to our knowledge that some remarks were made on a limited number of occasions that were very unsensitive to certain of our members.

None of those people who may have been offended have made a complaint to the Trustees however it was brought to our attention by some who witnessed the insults and were distressed on their behalf.

We are unable to apologise to those offended but what we are doing is to arrange compulsory training on equality and diversity and to include unconscious bias speaking in public places. Comments that were acceptable in the distant past are now totally unacceptable, but if you are above a certain age, some of those comments may be repeated without thinking. This training will include all Trustees and Volunteers who are in a position to address the public.

Accounts Management

Our Management Accountant has worked wonders in the time she has been with the BBKA. Each budget holder is now able to receive exact details of their income and expenditure whereas in the past the accounts system only produced end of month figures without details. To do this has been a rather intensive task taking many hours and I know that Sarah Laidler who has that post has worked tirelessly to rearrange the account to be more open and accessible, she has been first in the office and many times there until 7pm at night also attending the office at weekend when she can work without interruption of telephones etc., I would like to say a personal thank you for her dedication to the task and celebrate with her on a job well done.

Although in accounts it is always a moving feast and the more you improve the more detail you think you can provide.

eR2

Another task well done in the office is that of the eR2 data manager, Michelle has worked tirelessly in getting this up and running, working with the associations and branches to help them to understand how it

all works. I also have to mention Martin Smith, who has been instrumental in the programming and problem solving and Mark Oakley who has been the one to test the programme before its issue.

I know that a few of our members will now be muttering that it was not plain sailing but the majority of members having got over the first hurdle say it has improved their efficiency and it is all now much easier than in the past.

As I am somewhat a dinosaur about IT I take my hat off to those who are now fully operational on the system. This only leaves a small minority who are having problems, hopefully now getting to where they need to be.

Can I mention also that Michelle has suffered some sharp and unwarranted comments from members asking for help. I am sure that you will agree that if someone is bullying or rude it is perfectly acceptable for her to put the phone down without further response.

School Membership.

We are continuing to try to attract schools into the BBKA. It needs one member of staff to join and to have some training for the position, another couple of helpers are advisable and we are hoping that the local branches/associations will offer support to these schools. There is nothing more rewarding than to imprint such an important subject onto a developing mind, the children are very inquisitive and ask far more questions that you think are possible and most have little fear. Although there are some who have already the opinion that if it buzzes it is dangerous, it is so nice to counter that belief and explain the life of a bee and what the tiny creatures do.

It is not just looking after the bees, it is the harvesting of the honey and then using that honey in a baking class, art classes are also improved as they try to draw a honey or a bumblebee and certainly our 'Bees in the Curriculum' is a must for any school. If your branch is able to support such a school, please contact your local schools to see if they have the land and the will to help their pupils understand more about nature.

Research.

We have had only a few enquiries about the possible effects of the 5G network on our bees. Pam Hunter has suggested those who enquire to read the EKLIPSE report on the impact of electromagnetic radiation on insects, invertebrates and plants.

This report reviewed all peer-reviewed papers and concluded that currently there is no clear evidence for any adverse effects on honey bees but also noted that more evidence is needed.

It is early days yet and as soon as we have more information we will of course let you know.

Show at Chatsworth 5th to 9th June 2019

If you are lucky enough to be going to the Garden Show at Chatsworth look out for the BBKA and Derbyshire Beekeepers marquee, you will meet some very enthusiastic members there who are giving their time without reward in order to help educate the public about the need for our pollinating insects, Honey Bees in particular,

The Shows Team will set out displays to give an interesting insight into the life of a honey bee and how essential pollinators are in the world, there may even be a table showing the result of not having bee's, the remaining food is rather boring and let's hope it will raise some awareness of their plight.

I was in a Garden Centre (my favourite shop) and a lady at the service desk was complaining that she could not get a particular insecticide, the staff member could only apologise and say it was a management decision, I was not close enough to intervene before the customer walked away but I did speak to the staff member and asked why she did not tell her the reason, well it transpired that she did not know the reason so I explained it to her hopefully so that she can pass that information on to other staff and customers alike.

Staff changes

We were very sorry to lose Alex who worked in the office, mainly on the Adopt a Bee Hive section but a wizard at taking members calls too, the nice thing is that he is now working among people nearer his age group but I bet he will miss the motherly attention he got from the ladies in the office.

Treasurer of the BBKA

Lyn Barker has been our very valued treasurer for a number of years but now finds that her time is more and more in demand looking after a member of her family, she is not deserting us at all and is there for advice if we need it. However, she has asked if we can find a replacement Treasurer to take over her role as she is really struggling to find the time for that role herself. So if you have the skills and the willingness to take on that post, please contact the office and they will give you an overview of the role, this is a voluntary with expenses only but it is a very interesting and not too demanding a role within the BBKA

Asian Hornet Action Teams

I would like to make another appeal for those areas that haven't got their AHAT teams in place to please do so and then notify Leigh Sidaway on gen.manager@bbka.org.uk of the contact details so we can put them on the map on the website. We do need as much in place as is possible before the queens start to reproduce the very many queens for next year