



CANTERBURY BEEKEEPERS

A branch of Kent Beekeepers Association

EDITOR'S NOTES

As the days turn cooler and shorter, there's little work to be done in the apiary, but you can get busy in your bee-shed, repairing and/or painting boxes, sterilising comb with glacial acetic acid, scraping and flaming wooden parts and finally getting around to rendering your wax. It's also the time for branches to review the year, and elect a new committee, which is exactly what we will be doing at our next meeting on 7th November. Please come along – there's lots of audience participation, whether in cake baking, honey tasting, or in the collection and discussion of ideas for 2019. More details on page 2.

We will be holding our branch Christmas party on Saturday 8th December in St Mary's Hall in Upper Harbledown. Magdalene Mei Halkes will reprise her excellent party banquet skills. If you can join us from 7pm-10pm for an evening of convivial conversation and good food, then watch out for an email in a couple of weeks' time, and make sure to let us know that you are

coming by 30th November – partners are very welcome. A modest charge will be made to cover the costs of food and hall hire. Bring your own beverages.

Last month I was pointing out confirmed sightings of the Asian Hornet in Hampshire and Surrey, and many of you will know that *Vespa velutina* was confirmed in Dungeness on the 17th October. The Kent Online newspaper did a reasonable job of [reporting](#) this finding, but other outlets are not so discriminating. One (unmoderated) comment on the Kent Online article is typical of the

unhelpful combination of lack of familiarity and understanding – “*You say this is the first in kent we spotted one in barham in June at a vintage rally not knowing what it was*” (sic). Beekeepers are likely the people most likely to be impacted - primarily by the predation of hives by *V. velutina*, and it follows that we have got to learn, be vigilant, and be prepared to educate others why they should make an effort to report/identify hornets.

Adrian

Indoor Meeting

**Review of
2018/AGM**

All invited

**Whitefriars
Management
Suite**

**Wed 7th
November**

7.30-9.30pm

Details on p2

CBKA Officers

Chairman: David
Cockburn

34 Whitstable Road
Canterbury CT2 8DQ
01227 457517

**Treasurer and
Membership:**

Joan McAllister
42 Canterbury Road
Lydden, Dover
CT15 7ER
07824 668042

Secretary & Newsletter Editor:

Adrian Davis
24 The Grove
Deal CT14 9TL
07816 975286

Committee Members

Julian Audsley
Simon Daniell
Magdalene Mei Halkes
Maggie McKenzie
Michael Roberts
Jan Soetaert

The easiest way to contact us is via email using the links above, but you can also use the contacts page on the website.

Contact [Newsletter Editor](#) to contribute articles

NOVEMBER 2018

DATES FOR DIARY: yearbook at <http://canterburybeekeepers.org.uk/calendar/cbka-list/>

Wed November 07 Sat November 10	branch AGM, Whitefriars Management Suite, Canterbury CT1 2TF, UK BBKA modules examination day https://www.bbka.org.uk/modules
Sat November 24	BBKA microscopy examinations
Sat December 08	Christmas party, St Mary's Hall, Upper Harbledown, 7-10pm
2019	
Wed January 09 Wed February 06	branch indoor meeting, Beekeepers' Q&A, Whitefriars Management Suite branch indoor meeting, Lauren Kennedy, Bumblebee Conservation Trust. "Making a Buzz for the Coast" , Whitefriars Management Suite
Sat February 09	closing date for applications for BBKA module examinations
Sat February 28	closing date for application for BBKA practical examinations
Wed March 06	branch indoor meeting, Topic TBD, Whitefriars Management Suite (any suggestions from members gladly received)
Sat March 23	BBKA modules examination day https://www.bbka.org.uk/modules

You can get our calendar, either as a google calendar (cantbees@gmail.com), or for other programmes using this URL: <https://calendar.google.com/calendar/ical/cantbees%40gmail.com/public/basic.ics>

INDOOR MEETING

Review of the Year/AGM

Wednesday 7th October, 7.30-9.30pm

We'll be engaged in a pot-pourri of activities:

- review of the year
- what we should try to do in 2019
- honey tasting
- tea/coffee and cake
- Body wisdom for beekeepers
- election of officers

For those of you who produced honey this year, please bring a small bottle for a very informal tasting session.

If you are inspired by Rahul, Kim-Joy or Ruby, bring along your handshake-winning cakes

If you have a photo or two of branch meetings in 2018, or even exciting things that happened in your own apiary, please email them to me before 5pm on Wednesday, and I'll try to build a slideshow. It's not a photography competition, just a record of the year!



DIRECTIONS

Whitefriars Conference room, Canterbury

Free parking in the multi-storey car park. Collect your ticket and this will be processed during the meeting. Park on the 1st floor on the left and take the corridor down to the management suite at the bottom of the corridor on the left. Please car share if you can, since Whitefriars have to pay the cost of this on our behalf.

By car Set SatNav post code to CT1 2TF

Go around the ring road and at the roundabout opposite the Police Station turn through the city walls into Watling Street. Go past the bus station on your right and the Whitefriars multi-storey car park is straight ahead and right at the mini-roundabout. If coming from the south go down the Old Dover Rd and straight across the roundabout through the city walls.

By foot / BUS

Between the Bus Station and Whitefriars centre there is an alleyway between Boots and Next. Here there is an entrance to the car park. Go to the first floor by lift and turn left out of the lift through double doors. The management suite is 20 yards along this corridor.



BRANCH NEWS

Meet the Public Events

Our last event of the year was the two-day Apple Festival at Brogdale on 13-14 October. The weather was unseasonably warm, and the rain stayed away until we were packing up. We sold 149.5 lb of honey, 27 packs of comb honey and 13 wax blocks, for gross sales of £1210, yielding over £100 in commission. We sold nearly £200 of Bekesbourne honey and comb, so our branch apiary has already yielded a good return (with plenty more honey in buckets for the spring).

The Apple Festival is also a good opportunity to encourage people to get some instruction on keeping bees. The load was lightened by having plenty of people helping out over the two days – Karen and David, Kevin, Magdalene, Isabel, Robert and Maggie helped set up and run the stall; Dougal, Debbie, Simon, Norman, Joan, Julian, David and Adrian supplied and helped sell products; David and Julian gave the talks.



Membership Renewal

As of 1st October, Kent BKA subscriptions become due. Thanks to the 40 people who have already renewed their membership – it really helps our Treasurer if we can get most of the work done by end of November.

As usual, we have an online form that you can use to submit your personal information digitally. You will still have to make your own arrangements for payment – either with a BACS transfer (preferred) or a cheque. The full details of membership rates can be found on our website, and are access from the renewal form. Submit your renewal form by navigating to this page:

<https://canterburybeekeepers.org.uk/membership-renewal-2018-9/>



HOT BOX HIVES.

At the recent National Honey Show at the end of October, I attended a lecture on the history and importance of thermoregulation and ventilation in beehives given by a retired engineer.

Derek Mitchell, <http://www.honeyshow.co.uk/lectures-and-workshops.php#dm> pointed out that in his original paper Langstroth talks of the importance of keeping bees warm and avoiding condensation; he also discussed the early success of the WBC. He then went on to talk about how, during the depression and WW2, economy came to the fore and people switched to light single-walled hives with consequent condensation problems. It was to mitigate those that the match-sticks-under-the-roof idea was popularised. He also discussed how ventilation at the top of a hive results in moving the thermocline up rather than lowering the temperature round the cluster itself.

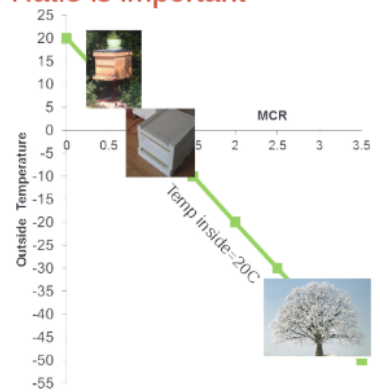
He was rather disparaging of the modern poly-hive, which he thought inadequately insulated, and instead recommended 3" of Kingspan all round, a good separation of cluster from floor, a small entrance and Varroa board in place. He didn't really discuss the expected benefits of his approach except to say it would be more like a 'natural' log hive as described by Tom Seeley, so it should result in better health and higher yields.

Derek Mitchell @Derekmorville · 10 Dec 2016
#nature #savethebees #bee #bees #honeybees
Trees are much warmer than hives

Mass conductance Ratio is important

Bees are conventionally not in cluster when the temperature inside the nest is above 20C and are producing ~20 W per 10,000 bees.

This implies Bees in wooden hives start to cluster just below 10C
In polystyrene hives 0C
but in trees below -40C!



At the same show the Thermosolar hive was presented: <http://thermosolarhive.com/en/thermosolar-hive/technology/in-detail/> This Czech made hive is not only heavily insulated but has solar heating. The objective being to maintain a steady 35-40 °C year round. The main benefit claimed being that female mites are unable to breed in a high humidity, high temperature environment while the temperature of the hive can be raised, in the spring, to 40-45 °C for a couple of hours to kill all the mites while not harming the bees. So-called "thermotherapy" for the bees. The complete hive was selling at the show for £447 including 2 supers and a 14/12 brood box.



The last thing I need is another hive but the idea of using heat to kill Varroa is not new and this seems like an effective way of achieving good kills while delivering a comfortable environment for the bees, less condensation and higher yields in a good-looking hive.

David Cockburn



Positive Thinking

November, 2018



Mission Statement:

- To further and promote the craft of beekeeping
- To advance the education of the public in the importance of bees in the environment.

The unified voice of British Beekeeping

Welcome

We have had the results of the [honey survey](#) and we would like to thank all those members who took the time to complete the questionnaire, it is important that we monitor what is happening to the honey bee and this is a guide line to tell us how the bees are managing through the year. Diane Roberts also did a marvellous job of promoting this to the media and we have had a fantastic coverage throughout the UK with over 298 TV and Radio stations spreading the news. All good for letting the public know of the value of honey bees to the UK economy.

-Margaret Wilson, Chair of the BBKA

What have we done for the BBKA

I was asked this question a while ago and had to think about it because every day we are active with one thing or another and it all seems to blend in with the office staff and outside agencies. We have achieved some developments this year and to name a few here

Table of Contents

[Safeguarding policy](#)

[Honey Show Risk Assessment](#)

[Spring Convention](#)

[Bulk orders](#)

[Welcome](#)

[What have we done for the BBKA](#)

[Special Editions](#)

[National Honey Show](#)

[Research](#)

Quick Links

[Our Website](#)

02476 696679

Safeguarding policy

I have been asked to let you know that the Safeguarding Policy is

is my initial list, forgive me if I have missed mentioning some items.

One of the important things is the development and publication of the Special Issue books, many branches use them for their beginners and throughout the learning process for beekeeping. They are easy to read and concentrate on a single subject and not expensive at all.

We have also during the last few years reduced our costs, on professional services and Insurances and we have maintained those savings and improved them slightly again this year.

There are improved communications in place, all calls are now recorded and the telephone system is now helping to direct calls to the correct person rather than waiting to be transferred.

The new School Visitors pack was completed by Sue Webster and was available at a discounted price at the Spring Convention.

Educational material has been improved, the Healthy Hive Guide, Bees in the Curriculum, concentrated courses for General Husbandry and Advanced Husbandry over the past two years and we are planning to make Queen Rearing one subject for concentrated efforts to pass on this knowledge.

There are more training courses and we believe that we have managed to give a better content to each course.

The offices have been redeveloped so that the staff are not overcrowded and they now have their own space in which to work, this has resulted in a much better atmosphere in the offices much to everyone's delight.

The redevelopment of the Apiary at Stoneleigh is still in the planning stage, but work is going on as I write, we are hoping that in Summer 2019 work on the project will start. There is the additional build to the office building to include Disabled toilets and a cloakroom for when we are able to invite visitors to the site.

now on our web site so that you can download it. The office has received many calls for this so it is good to be able to say, here it is all finished for you.

Honey Show Risk Assessment

You will also find this assessment on the Web Page, Julian Routh has kindly prepared it and we are now able to offer it to you should you need it for your own honey show.

Dates for your diary

The BBKA Spring Convention at Harper Adams University, Shropshire, TF10 8NB; 12-14 April 2019. This is THE BBKA educational event of the year. The Spring Convention Committee are busy planning another great programme of lectures, workshops and seminars.

Accommodation and meals are available on-site and exhibitors have started requesting their preferred stand spaces for the Saturday 13th April Tradeshow.

Whether you are already a regular participant, a newer beekeeper or don't keep bees at all,

We also have an improved accounting process, it is still in development and Sarah Laidler who is now our Management Accountant, a full time position that is proving to be a great asset and we hope to be up and running with better reporting processes in place by the end of 2018.

Research has been given a shot in the arm with Pam Hunter, she already has five scientists working on our behalf and she keeps an eye on every development to make sure we are getting the best out of our contributions.

Then we come to the important news for members, Capitation, we have managed to maintain a surplus again this year so there will be no need to ask for an increase in Capitation again. I am sure you will all appreciate that small piece of news and the effort that has gone into keeping costs down.

On to Donations etc., George Brown has done a wonderful job this year and has exceeded his target, I have to say he is not sitting on his laurels, he is after more funding to maintain the BBKA and to fund research into all things important to Bees and Beekeepers.

Finally, Adopt a Beehive is a very popular, commodity it is the gift one can give when the recipient seems to have everything they need and you are struggling for ideas for Birthdays or Christmas. Thanks to the work of Margaret Murdin and George Brown, Suttons Seeds who now sponsor us will also offer the Adopt a Beehive through their shop for us.

Well that's the end of the things I can remember at the moment, but we are always looking to improve our services to members, in education and involvement in research.

If you have any ideas where you think we can make a difference, please let me know.

Special Editions

Having featured *Feeding and Flower Families* last month, this month's Special Edition is *Honey Bee Anatomy*. Because over Winter with no bees to tend to now is the time to learn more about different aspects of beekeeping. Take up a new challenge and have a look at local courses, there is some excellent information in this book to teach you about what you can do with a microscope.

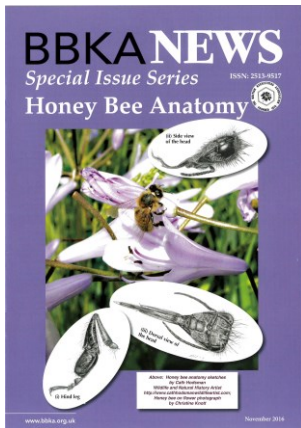
there will be something for everyone at this sociable event. Meet old friends and make new ones. Discuss beekeeping for three days if you wish, without anyone glazing over! Further information will be available from the BBKA website and tickets go on sale in mid-January. Plan to come for a day or stay for the long week-end. We look forward to seeing you. Don't miss out! Reserve 12-14th April in your 2019 diary!!

Bulk orders

Thinking ahead to the New Year and the 'Introduction to Beekeeping' courses you will be running – you may want to purchase a bulk order of some of the BBKA Special Edition Series Booklets or the BBKA Guide to Beekeeping 2nd Edition book.



If so please give us call on 02476 698620 – we can take your order and bring it with us to the ADM for collection – this cuts out the postage



Again the cost is £4.00 and there are 20 excellent pages of information kindly provided by Ian Stell. These are available from the BBKA direct or through your link Trustee, this would save you the cost of postage and you can catch up with the latest BBKA news from your Trustee at the same time.

National Honey Show 2018

This took place from Wednesday 24th October to 27th October 2018 and from what I have heard it was a resounding success, good lectures and trade stands and it was as usual very well organised and certainly well attended.

Because I have recently had foot surgery I was unable to be there this year as my mobility was not good at all, hopefully when my foot is healed I will be up and about as much as ever. I have to say that I missed being there and meeting more members to hear what they had to say about how they thought the BBKA is performing although other trustees who were there said there were favourable comments, so thank you for that. We do try very hard to give you a good service and to be open about what we are doing, keeping you up to date with actions and events as soon as we can via this monthly letter.

Research

Our four academic groups who have received funding for research have all made good progress and have given us reports. These will be published in BBKA News in December. In addition all four groups will be presenting their work at the Spring Convention, please

costs. All items must be paid for by either credit/debit card when placing the order.

These prices are for 10 copies of each book/booklet and over:

BBKA Guide to Beekeeping 2nd Edition £12.00 each

BBKA News – In the Apiary £3.00 each

BBKA News - Honey Bee Anatomy £3.00 each

BBKA News – Feeding Honey Bees £3.00 each

BBKA News – Flower Families for Forage £3.00 each

BBKA News - Swarming £3.00 each

BBKA News – General Husbandry £8.00 each

BBKA News - Advanced Husbandry £8.00 each

We will be taking some items to the ADM but must be paid for with cash as we will NOT be taking a card machine.

do support this event and come and hear what they are doing. If any Association likes one of the topics especially, they may like to perhaps give some funding for that particular project.

The projects cover a wide range of work, encompassing disease, biologically based field studies, and two technological based projects. Prof. Steve Martin (Salford University) is continuing his studies investigating whether there is any tolerance to varroa evolving in UK honey bees. This centres around whether there are high recapping rates and/or a low mite reproduction rate. Dr Rinke Vinkenoog (Northumberland University) is investigating whether there are differences in the foraging behaviour between urban and rural honey bees in urban and rural areas in North East England. In addition the group is studying the range of pollinators visiting the forage; this includes bumble bees, solitary bees, hover flies, butterflies and other insects. This has produced some interesting and in some cases, surprising results. Both of the other two groups, led by Dr Clint Perry (Queen Mary University) and Dr Michael Ramsey (Nottingham Trent University), are using very modern technology, one to monitor what is going on inside the hive, the other to monitor bees entering the hive. Michael Ramsey is using inexpensive (<£1 each) vibrational sensors, called accelerometers, to monitor what happens in the brood chamber in a non-invasive manner using Raspberry PI computers. Clint Perry is developing a less expensive type of method, monitoring bees entering or leaving the hive. He is using QR codes on the thorax of the bee so that they are registered as they enter. This will allow more studies to be carried out on the development of the colony.

The EU PoshBee project has progressed and members from Kent and the environs have come forward to volunteer their hives for the apple orchards in the spring. There will be eight sites, four in organic orchards and four in conventional orchards, each with three hives. The beekeepers will receive a fee for loaning their hives and they will monitor them during the season. The University staff will be collecting a range of samples from all colonies, including for example, bee bread, wax, pollen, and in addition they will be surveying the forage around all of the sites. This experiment is being run in eight countries, commencing Spring 2019.