



# CANTERBURY BEEKEEPERS



A branch of Kent Beekeepers Association

## EDITOR'S NOTES

My summer holiday came early this year, hence the absence of a July newsletter. Going through my inbox, there has certainly been a lot going on, both in the Canterbury area and more widely in the bee-keeping community. As a branch, there have been some good events for introducing people to beekeeping, at Brogdale and with the young farmers. There has been the entertainment – for some – of collecting swarms, and the minor hassle for others of dealing with a series of “false alarms” about bumblebees. There might have been a honey bee swarm outside the Gulbenkian Theatre, but it had left before we got there!

Now that we are coming to the end of the honey

### Apiary Meeting

#### At Malindi's

Ashby Meadow,  
6a Westbere  
Lane, Westbere  
CT2 0HH

**Saturday 2nd  
September**

2-4pm

Details on p2

harvest, it's good to see people borrowing the club extractors to take their crop. But it's also the time when wasps become a nuisance – primarily for small/weak colonies, but also for colonies that have “accidental” gaps in roofs or boxes. A couple of tips have been provided on page 4.

Hopefully your honey harvest more than meets your expectations. We will be delighted to have plenty of freshly harvested

honey for the public to taste and buy at our next “meet the public” event on Saturday 26<sup>th</sup> August in Whitefriars. We are heavily reliant on a small group of volunteers to man the stall on such days, but previous experience is not necessary! I will send a reminder out next week, but if you can spare a few hours on that day, Michael Roberts and the show team would love to have you support them

Adrian

### CBKA Officers

Chairman: David  
Cockburn

34 Whitstable Road  
Canterbury CT2 8DQ  
01227 457517

Treasurer and  
Membership:

Joan McAllister  
42 Canterbury Road  
Lydden, Dover  
CT15 7ER  
07824 668042

Secretary & Newsletter Editor:

Adrian Davis  
24 The Grove  
Deal CT14 9TL  
07816 975286

### Committee Members

Julian Audsley  
Simon Daniell  
Magdalene Mei Halkes  
Maggie McKenzie  
Michael Roberts  
Jan Soetaert

The easiest way to contact us is via email using the links above, but you can also use the contacts page on the website.

Contact Newsletter Editor to  
contribute articles

**AUGUST 2017**

## DATES FOR DIARY: yearbook at <http://canterburybeekeepers.org.uk/calendar/cbka-list/>

<b>Saturday 5<sup>th</sup> August</b>	<b>Apiary meeting at 6a Westbere Lane, Westbere CT2 0HH, 2-4pm</b>
Friday 25 <sup>th</sup> August	Closing date for entries to East Kent Ploughing Match honey show (entry form <a href="#">here</a> )
Saturday 26 <sup>th</sup> August	Canterbury in Bloom – meet the public display and honey sales in Whitefriars precincts 10-4pm
Thursday 31 <sup>st</sup> August	Closing date to apply for BBKA Microscopy Certificate (25/26 November)
<b>Saturday 2<sup>nd</sup> September</b>	<b>Apiary meeting at 6a Westbere Lane, Westbere CT2 0HH, 2-4pm</b>
Wednesday 6 <sup>th</sup> September	Committee meeting, 7-9pm, Old Gate Inn, Canterbury
Wed 27 <sup>th</sup> September	East Kent Ploughing Match, Quex Park 9-4pm (meet the public)
Saturday 30 <sup>th</sup> September	Closing date for entry to BBKA exam modules (11 <sup>th</sup> November sitting)
<b>Wednesday 4<sup>th</sup> October</b>	<b>Indoor meeting, Whitefriars Management Suite, CT1 2LF 7.30-9.30pm</b>
Monday 9 <sup>th</sup> October	Closing date for National Honey Show entries
14-15 October	National Apple Festival at Brogdale - meet the public display and honey sales
Sunday 22 <sup>nd</sup> October	KBKA autumn lectures, 2-4pm, Lenham Community Centre ME17 2QT
26-28 October	National Honey Show, Sandown Park racecourse, Esher KT10 9AJ

You can get our calendar, either as a google calendar ([cantbees@gmail.com](mailto:cantbees@gmail.com)), or for other programmes using this URL: <https://calendar.google.com/calendar/ical/cantbees%40gmail.com/public/basic.ics>

## APIARY MEETING

Saturday 2<sup>nd</sup> September

2-4pm at Ashby Meadow, 6a Westbere Lane, Westbere CT2 0HH.

The weather on the 5<sup>th</sup> August was not very good for beekeeping. In my 9 years with Canterbury Beekeepers I don't remember an apiary meeting where we didn't manage to open a live hive! Malindi and Steve were gracious hosts, and because we didn't get to inspect their bees, they have invited us back!

Malindi offers the following guidance for parking. Folk can park in my drive (right hand side as it is shared with neighbours) or anywhere on the road. Walk down the right hand side of Ashby Meadow, 6a Westbere Lane and you will see the hives at the bottom of my garden.

As ever, usual apiary hygiene rules apply, so bring clean bee-suits, and no leather gloves, only disposable or washable Marigold types. If you need to borrow a suit, please let us know beforehand.



## BRANCH NEWS



### Meet the Public

In June and July, we were at two events at Brogdale. The Cherry Festival in July yielded more honey sales (£366) than the Strawberry Fair in June. On both occasions, we spoke with lots of people, many of whom are entranced by the observation hive. Dougal even captured a textbook "queen court" within the observation hive:



We have decided to generate a bit more noise during our talks, so our next events will feature a miked-up David Cockburn! This month we will be supporting **Canterbury in Bloom on Saturday 26<sup>th</sup> August, 10-4pm**. As ever we are desperate for members to volunteer to help out running our stall. No expertise is required – just enthusiasm and a willingness to talk about bees. Honey sales are usually good in Whitefriars, if you'd like to offer honey for sale.

### Other Events

Thanks to Kyriakos Tsafaras, who allowed us to use his apiary, we had a successful meeting with the Canterbury Young Farmers in June. Here's a photo, courtesy of Magdalene Mei Halkes of David (and others) looking statesman-like amongst all the young people!



### Equipment for Hire/Sale

We recently received a collection of honey buckets from David Lacey, who is retiring from beekeeping. There are too many for the branch to use, so if you need one or two because of a surplus, please contact [David](#).

You might also be interested to know that David James has a range of beekeeping equipment for sale on eBay (link [here](#)).

### Apiary Sites

"My mum lives in Faversham and owns about 3 acres of woodland behind her house. I suggested to her that perhaps she could hire a bee hive and put it on the land to help with the dwindling population of bees. I don't think she is interested in keeping the bees herself, but would be willing to have the hive/hives on her land. The land is protected and rarely used by the public." (from Liz Adams)

Please contact [Adrian](#) if you are interested in keeping bees in Faversham and want to be put in touch with Liz.

### Beginner Courses

For everyone's information, Julian's autumn course for beginners in beekeeping is already full, although I daresay he is taking names for his course in the New Year.



## BBKA NEWS

There have been quite a few communications from the BBKA recently which are intended for general circulation. Originally, I planned to incorporate them into the newsletter, but there are so many pages, that in the end I have gone for a synopsis, as they would make up a newsletter in their own right! The link below will open up the combined content; the topics covered are:

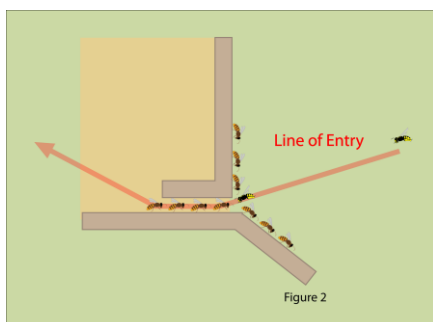
- The Great British Beekeepers' Association Bees in Art Competition 2017. The theme is "Sound and Vision". Closing date for entries 31<sup>st</sup> August 2017.
- Introduction of a new membership category for schools
- Highs and lows of the recent International Meeting of Young Beekeepers
  - Podcast on Farming Today (link [here](#))
  - Letter from BBKA chair on financial questions
  - Letter from Ian Homer (IMYB organiser)
  - BBKA response to Homer
- Good news from BBKA Chair, President, Vice-chair, Chair of governance

No doubt more will be written about the bad feeling that seems to have been generated by the IMYB. Remember that all of the (volunteer) officers of the BBKA are trying to do the right thing, even if they don't always see eye to eye, or realise the impressions they create amongst those of us who look on from afar.

<https://www.dropbox.com/s/s6t9250n98izs5z/BBKA%20summer%202017.pdf?dl=0>

## WASP CONTROL

During our rained-off meeting last weekend, there was much talk of wasps, their nuisance to weak colonies and how to discourage them from attacking hives. Wasps communicate sugar sources back to their nest, so reducing entrances, avoiding any kind of honey or sugar spill, and removing the scent of a full super are standard practices. One member is using the new wasp deterrent entrances from Thornes "[Wasp Out](#)", which creates a tunnel



entrance styles follow.

entrance. I've made something similar with a left-over piece of cable guard (the sort that is used to protect cables buried in plastered walls) in an apiary that seemed busy with wasps last weekend. Julian and Anne are in emergency measures with a weak colony in their garden, and supplied this photo of a tube entrance used to make the wasps "run the gauntlet" of 5 or 6 ranks of bees rather than just one or 2 in a standard entrance. The picture on the left shows the principle that both







**"Bee Improvement for All"**

Dear Beekeeping Colleague,

In conjunction with the Bee Improvement and Bee Breeders Association (BIBBA) the **West Sussex BKA** will be holding a **"Bee Improvement for All"** (BIFA) day. This is one of a number that BIBBA will be staging throughout the U.K. on a regional basis. We have tried to select a date as far ahead as possible in the hope it doesn't clash with other events. These events are popular and it would be appreciated if you could avoid arranging an event on that day.

Please publicise the event in your newsletters, website and meetings and ensure this message goes to as many organisers and beekeepers as possible.

Details as follows:-

**"Bee Improvement for All"**

An all day event aimed at encouraging all beekeepers to improve their bees. The purpose is to help all beekeepers to continuously assess their colonies, so they have a good idea of which queens to cull, and which colonies to take queen cells from when they need new queens.

There will be tuition on how to raise queens using queen cells that bees often present us with during the summer, as well as some simple "artificial" techniques that may be suitable for the more advanced beekeeper, or those working in groups.

Further details can be found on <http://bibba.com/>

**Date:-** Sun 19th November 2017

Time:- 9.00 for 9.30-4.30 approx.

**Venue:-** Rudgwick Village Hall, Guildford Road, Bucks Green, Rudgwick, West Sussex. RH12 3JJ. A map to the venue is available on the BIBBA website.

**Cost:-** £10/head adult. £7/head for under 18, who must be accompanied by a fee paying adult.

Refreshments included, but bring your own lunch.

**Bookings and Enquiries to:-** Daisy, 23 Hayes Lane, Slinfold, Horsham, West Sussex. RH13 0SQ. Tel 01403 790 167 or 07980 280 852 [wellingtondays@hotmail.co.uk](mailto:wellingtondays@hotmail.co.uk).

A Booking Form is available to download from the BIBBA website: <https://bibba.com/event/bee-improvement-bifa-day/>

Details of the event are also on the WSBKA website: [www.westsussexbeekeepers.org.uk/](http://www.westsussexbeekeepers.org.uk/)

## HIVE SUPPLIERS

I received this rather quaint email from Lithuania. The prices seem very good, and whilst this is not a recommendation, someone might want to give them a go!

*We're beekeepers and hive makers from the Lithuania. It's a part of Europe Union. Perhaps you're interested in our hives and hive parts? You can check-out our Facebook page: <https://www.facebook.com/bee hivemaster.eu/> . I also add our product price list.*

*Have a nice day,*

*Regards Rimasi Vaičiulis*

1. National hive includes a mesh floor, brood box, 1 supers+frame runners,crown board and roof.Fully assembled.  
The price is 52£
2. Commercial hive includes a mesh floor, brood box, 1 supers+frame runners,crown board and roof.Fully assembled.  
The price is 52£
3. National hive flat-pack includes a mesh floor, brood box, 1 supers+frame runners,crown board and roof.The price is 45£
4. National hive 14x12 includes a mesh floor, brood box 14x12,1 supers+frame runners,crown board and roof.Fully assembled.  
The price is 60£
5. Commercial 5 frame nucleus with 6 inch deep roof, mesh floor,eke, crown board.The price is 35£
6. National 5 frame nucleus with 6 inch deep roof, mesh floor,eke, crown board.The price is 35£
7. Langstroth hive 10 frames includes a mesh floor, brood box, 1 supers+frame runners,crown board and roof.Fully assembled.  
The price is 60£

