



# CANTERBURY BEEKEEPERS

A branch of Kent Beekeepers Association

## EDITOR'S NOTES

It's been a bad news month, from a bee husbandry perspective, firstly with more European Foulbrood being discovered in our area, and then the reports of Asian Hornet nests in Gloucestershire. You should have received separate emails on both of these topics. In either case, the best defence we have as beekeepers is to "know our enemies". Please take time to learn what the symptoms of EFB are (pp7-8), and how an Asian Hornet differs from our native and

other endemic species (p9). If you have not yet registered **ALL** of your apiaries with [BeeBase](#), take time to do it now. NBU responses are based on identifying apiaries in close proximity to any disease or pest outbreak – they can't help you if they don't know where you keep your bees.

On a more positive note, it's the time of year to enjoy and celebrate the fruits of our bees' labours. The Cathedral

has asked us to lend them a hive or two for their harvest festival events this coming weekend, and shortly afterwards on 5<sup>th</sup> October, we will be doing a honey tasting. Bring your honey along for a light hearted event (but make sure to filter off the bee-wings first!) We'd also be interested to see

other hive products, cakes etc.

If you have ivy in your garden, you will probably have a huge range of insects visiting now that the ivy flow is on. One species of solitary bee (*Colletes hederæ*) has

designed its lifecycle around feeding on ivy nectar and pollen, and can have the appearance of a swarm of bees, such are the densities of nest holes. We get quite a few calls about the ivy mining bee at this time of year, so I've reproduced the BWARS factsheet on p10, so we all can identify this for our neighbours.

Adrian

Next Meeting  
**Honey Tasting**  
**Wednesday**  
**5<sup>th</sup> October**  
**7.30-9.30pm**

Whitefriars  
Management Suite  
Canterbury CT1 2TF

Joining instructions  
See p2

## CBKA OFFICERS

**Chairman:** David Cockburn

34 Whitstable Road  
Canterbury CT2 8DQ  
01227 457517

**Treasurer:** Joan McAllister

42 Canterbury Road  
Lydden, Dover  
CT15 7ER  
07824 668042

**Secretary & Newsletter**

**Editor:** Adrian Davis

24 The Grove  
Deal CT14 9TL  
07816 975286

**Membership Secretary**

Jan Soetaert  
90 Heaton Road  
Canterbury CT1 3QA  
07849 603168

**Committee Members**

Julian Audsley  
Simon Daniell  
Magdalene Mei Halkes  
Maggie McKenzie  
Martin Neame  
Michael Roberts

The easiest way to contact us is via the website, but you can also e-mail

**cantbees@gmail.com**

Contact Newsletter editor  
to contribute articles

## OCTOBER 2016

A newsletter for friends and members of Canterbury BKA

## DATES FOR DIARY

Wednesday 28 <sup>th</sup> September	East Kent Ploughing Match, Nonington 9-4pm
<b>Wednesday 5<sup>th</sup> October</b>	<b>Branch indoor meeting, Honey tasting, Whitefriars Management suite</b>
Tuesday 11 <sup>th</sup> October	"The Close up World of Bees and Bee related Pest Diseases & Disorders" with Simon Croson. 8pm at Detling Village Hall, Kent ME14 3EY. Free entry, MidKent BKA
15-16 October	Brogdale Apple Festival, demonstrations and stall
Saturday 22 October	DDBKA Honey Show, Beech Grove, Nonington ( <a href="#">details</a> )
27-29 October	National Honey Show, Sandown Park ( <a href="#">details</a> )
<b>Wednesday 2<sup>nd</sup> November</b>	<b>Branch indoor meeting, AGM and quiz night, Whitefriars Management suite</b>
Sunday 6 November	KBKA Education Lectures, 1.30pm, Prof David Goulson & Prof Phil Stevenson Lenham Community Hall ( <a href="#">details</a> )
Saturday 12 <sup>th</sup> November	BBKA examination day ( <a href="#">details</a> )
<b>Saturday 3<sup>rd</sup> December</b>	<b>Xmas social event, 7.30-11pm, St Mary's Hall, Harbledown</b>

## INDOOR MEETING

### DIRECTIONS

#### Whitefriars Conference room Canterbury

Free parking in the multi-storey car park. Collect your ticket and this will be processed during the meeting. Park on the 1st floor on the left and take the corridor down to the management suite at the bottom of the corridor on the left. Please car share if you can, since Whitefriars have to pay the cost of this on our behalf.

**By car** Set Sat Nav post code to CT1 2TF

Go around the ring road and at the roundabout opposite the Police Station turn through the city walls into Watling Street. Go past the bus station on your right and the Whitefriars multi-storey car park is straight ahead and right at the mini-roundabout. If coming from the south go down the Old Dover Rd and straight across the roundabout through the city walls.

**By foot / BUS**

Between the Bus Station and Whitefriars center there is an alleyway between Boots and Next. Here there is an entrance to the car park. Go to the first floor by lift and turn left out of the lift through double doors. The management suite is 20 yds along this corridor.





## BRANCH NEWS



### October Meeting

Now the evenings are drawing in, we will return to Whitefriars for our monthly meetings. On the 5<sup>th</sup> October we want everyone to bring along a sample of the honey they have produced this year – and any other hive product, such as wax, candles, mead, propolis tinctures etc. If you feel like baking with honey, then that would be great too. We will have a light hearted judging session to try to find the best and the least good honeys – using the criterion of taste, rather than the physical characteristics that are used in real honey shows.

### Subscription Fees

These become due on 1<sup>st</sup> October for all members and friends of the branch. We have decided to try out an electronic renewal system this year, so that we can generate the documents that KBKA and BDI need, with less retyping of data. We'd be delighted if you would renew your membership using the online form at:

<http://canterburybeekeepers.org.uk/membership-renewal-2016-7/>

This allows you to send us your address details, and membership selections. However, it will not take any money from you. Shortly after submitting your renewal information, you will receive an email with instructions on how to pay – we'd prefer if you use electronic funds transfer, but a cheque is OK too.

Renewal forms for printing are also available from the website.

### Meet The Public

The Brogdale Apple Fair is next in October, who will rise up for the challenge? We need helpers and honey to cover two days of show-and-tell over the weekend 15-16 October. In exchange for a couple of hours of your time, you get free entry to the Apple Fair. Even if you can't commit time, we would be delighted to have your honey on the stand for sale (with the usual small commission for branch funds). Contact Maggie MacKenzie at [maggiemckenzie@vfast.co.uk](mailto:maggiemckenzie@vfast.co.uk) to volunteer, or for more information.

### Honey Shows

These are always enjoyable events, and even if you are not showing honey, beeswax or your cakemaking skills, they are a good opportunity to join in a rather traditional type of event, where beekeepers congregate to compare notes and see what the best honey (or candles or cake) looks like.

Dover and District BKA will be holding their honey show on 22<sup>nd</sup> October, in the impressive wooden hall of the Bruderhof Community in Nonington. Canterbury members have often done well at this event, so why not pick out your best pots of honey or beeswax, and enter? The show schedule and entry form can be found on p.6.

The National Honey Show takes place from 27-29 October. It's being held in a new, larger location this year – Epsom Race Course. The honey show is impressive in scale and quality but perhaps not worth a trip on its own. However, there are lots of lectures, classes and workshops to entertain and inform. This year there are two professors of apiculture from the USA – Sue Cobey and David Tarpey, plus an ex-president of the Irish Beekeepers association (FIBKA), amongst other knowledgeable and more local experts.

<http://www.honeyshow.co.uk/lectures-and-workshops.php>

### Eggheads

*"My name's Craig and I work on the BBC 2 quiz show 'Eggheads'. We are currently making a new series of the show and are searching for unique teams from all around the UK, who might be interested in having a bit of fun and applying to take part in the show. With that in mind, we think a team of beekeepers would fit the bill perfectly! it's definitely something we've never had before! So we are looking for teams of 6 who are up for a challenge and who would be interested in forming a quiz team to apply for the show. We'd love to hear from you if there's any interest!!*

*If this does sound like it might be of interest then please do let me know and I'll send some more information across."* Contact Adrian if intrigued and interested.



## KENT BKA NEWS



### Lenham Lectures

The KBKA education lectures this year are on 6<sup>th</sup> November, and feature two excellent speakers. Please see the full-page poster on page 5 for more details. David Cockburn will be able to furnish tickets at our next meetings.

### Council business

- The County Show made a small surplus for the KBKA. This after selling over £3000 worth of honey. There is a problem however with the Margaret Calder pavilion which is owned by KBKA and used for the Show. It not only requires refurbishment but there is asbestos in the ceiling and walls, final report awaited.
- Insurance is available for our club apiary shed and contents for £200 under a special deal.
- It was decided to stay with the CAF bank and pay the monthly fee.
- The new membership secretary is Steve Clarkson and the new webmaster is Simon Wilks
- We are reminded that BDI will pay us £100 to have a 'Disease Day' during the winter.
- Lectures. LASI lectures were recommended. Mike Edwards at Imperial College has volunteered himself as a speaker.
- We were reminded that our club is a branch of KBKA and not a free-standing association.

### KBKA Bye-Laws

The rules of association are regularly reviewed by KBKA council. The 2016 edition of the bye-laws and regulations can be seen at this [link](#). The changes are very modest, and therefore I'm not going to point them out. I can provide a summary of the amendments, if you email [cantbees@gmail.com](mailto:cantbees@gmail.com).

### Mid Kent Bee Photography Lecture

*"The Close up World of Bees and Bee related Pest Diseases & Disorders" with Simon Croson.*

8pm Tuesday 11th October 2016 at Detling Village Hall, Pilgrims Way, Detling, Kent ME14 3EY

Free entry

Simon has kept bees for just over 10 years in which time his photography has been awarded across all levels, including 2 Apimondia Gold Medals and numerous awards at Honey Shows. Simon will provide some tips and techniques to allow others to follow suit. He is travelling from Lincolnshire to speak to us.

You are welcome just to turn up on the evening, but MKBKA would appreciate an E Mail or phone call for catering purposes.

Sue Chartier, Secretary Mid Kent Beekeepers Association. [susanchartier@hotmail.com](mailto:susanchartier@hotmail.com) 01622 861333

Directions : from Maidstone or M20 junction 6, take A 249 Sittingbourne direction, turn next right ( across A249) to Detling Village, follow road left into village, turn left at pub The Cock Horse Inn and hall is on the left. Parking in hall car park or on road before hall.





*Saving our bumblebees*

Dave Coulson

*Sex, drugs and pollinators: the ecology and impact  
of toxins in nectar and pollen*

Phil Stevenson

Book stall, equipment stall and Bumblebee Trust information  
Lucky ticket prize draw and refreshments included in ticket price  
Doors open at 1.15pm, first speaker at 2pm

**Tickets £5 in advance from branch secretaries  
or £6 on the door**

Lenham Community Hall, Groom Way, Lenham ME17 2QT

For more information contact Kit Erhardt

Email: [kit.erhardt@doctors.org.uk](mailto:kit.erhardt@doctors.org.uk) tel: 01689 860605



Please see Adrian or David at our branch meetings on 5<sup>th</sup> October or 2<sup>nd</sup> November to secure your ticket.  
Payment for the tickets should be made on the door.

**DOVER & DISTRICT BEEKEEPERS' ASSOCIATION HONEY SHOW AND COMPETITION**

to be held in the

**Bruderhof Community Hall**

**Beech Grove, Forest Drive, Nonington CT15 4FB**

on

**Saturday 22nd October 2016 at 2.30 p.m.**

# SCHEDULE

## Officials

Honey & Wax Judge: → Mary Hill  
Wine Judge: → Brian Marlow  
Confectionery Judge: → Doreen Clark  
Association Secretary: → Maggie Harrowell  
Show Secretary: → Chris Holdstock

## Trophies (to be presented at 3.15 p.m.)

Dale Award (members only) → The most points in Classes 1–6  
Novice Award → The best entry in Class 13  
Greasley Award → The most points in Classes 22–25  
Challenge Cup → The most points in Classes 7–14  
Harry's Cup → The most points in Classes 15–17  
Victory Cup → The most points overall  
Blue Ribbon Award → The most outstanding exhibit in Classes 1–19

Entries must be made on the accompanying form and sent to the Show Secretary, Chris Holdstock, 36 Lower Road, Temple Ewell, Dover CT16 3DY (phone 01304-828041) to arrive not later than Saturday 15th October.

Please enclose a stamped addressed envelope so that class identification labels can be posted to you.

Here is a list of the open classes. Full details and the show schedule can be found on the DDBKA website [here](#).

- |    |   |       |   |
|----|---|-------|---|
| 7  | Two 1lb jars of Light Honey   | 13    | Novice Class. Two 1lb jars of matching Honey                        |
| 8  | Two 1lb jars of Medium Honey  | 14    | One super frame of Honey suitable for extracting                    |
| 9  | Two 1lb jars of Dark Honey  | 15    | One cake of Natural Beeswax not less than ½" thick, weighing 7–9 oz |
| 10 | Two 1lb jars of Soft-Set or Granulated Honey  | 16    | Three matching Natural Beeswax Candles, one to be lit by the Judge  |
| 11 | One article of any kind related to beekeeping as for Class 6  | 17    | Five matching 1oz (approx) blocks of Natural Beeswax                |
| 12 | Composite Class. Any three of the following:<br>— one 1lb jar of Light Honey<br>— one 1lb jar of Medium or Dark Honey<br>— one 1lb jar of Soft-Set or Granulated Honey<br>— one 1oz block of Natural Beeswax<br>— one frame of Honey<br>— one article related to beekeeping, as for Class 6 | 18    | One bottle of sweet Mead  |
|    |   | 19    | One bottle of dry Mead  |
|    |   | 20    | One bottle of sweet Home-Made Wine                                  |
|    |   | 21    | One bottle of dry Home-Made Wine                                    |
|    |   | 22-25 | Confectionery classes (see schedule for recipes)                    |



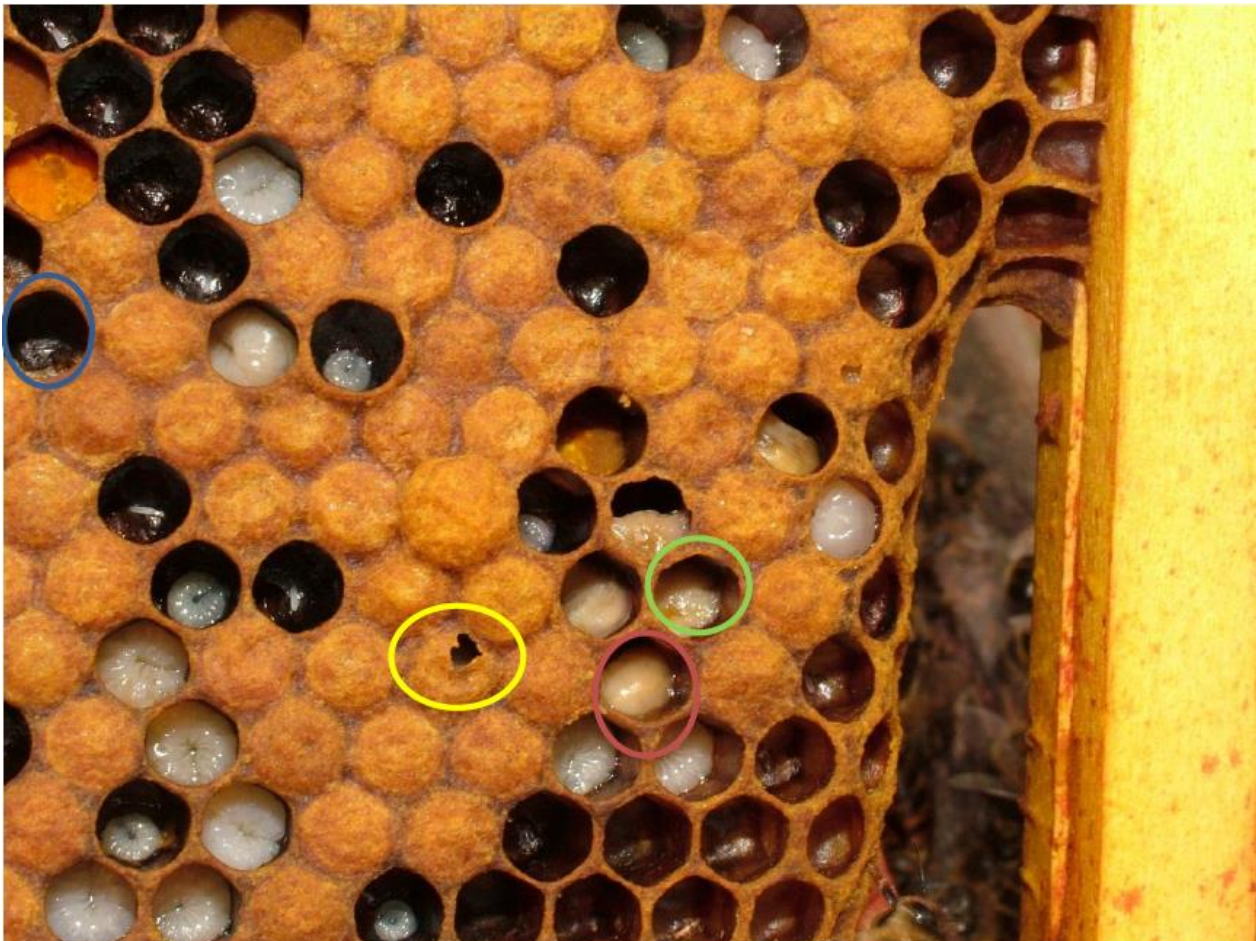
## IDENTIFYING FOULBROODS

The National Bee Unit (NBU) is charged with controlling the notifiable brood diseases American and European foulbrood (AFB and EFB). Despite their names, both occur in the UK and both can lead to the death of infected colonies. Both foulbroods are statutory notifiable diseases and therefore, beekeepers are legally obligated to report any suspected diseased colonies under the Bee Diseases and Pests Control Order 2006 (as amended).

EFB is caused by the bacterium *Melissococcus plutonius*. Larvae become infected by consuming contaminated food fed by the nurse bees. The bacteria multiply within the larval gut, competing with it for food. They remain in the gut and do not invade larval tissue; larvae that die from the disease do so because they have been starved of food. This normally occurs shortly before the cells are capped.

AFB is caused by a spore forming bacterium called *Paenibacillus larvae*. These spores are the infective stage of the disease and infection begins when food contaminated with spores are fed to larvae by the nurse bees. Once in the gut of the larva the spores germinate, bacteria move into the larval tissues, where they multiply enormously. Infected larvae normally die after the cell is sealed and millions of infective spores form in their remains. *P. larvae* spores remain viable for many years. They are very resistant to extremes of hot and cold, and to many disinfectants.

If you suspect that you have foulbrood, you MUST contact the NBU, or your local Inspector (Kay Wreford, [email](#))



**Figure 1, a comb showing symptoms of European foulbrood (EFB).**

Symptoms of European foulbrood:

Twisted and discoloured larvae;

Chewed/perforated cappings;

Melted larvae;

Scales.

## Symptoms of EFB

An infected colony may show some or all of the signs below:

- Erratic or uneven brood pattern;
- Twisted larvae with creamy-white guts visible through the body wall;
- Melted down, yellowy white larvae;
- An unpleasant sour odour;
- Loosely-attached brown scales;

Unlike AFB, the remains of larvae that die from EFB do not rope when drawn out with a matchstick.

## Symptoms of AFB

The characteristic disease signs of AFB include some or all of the following:

- Uneven or 'Pepper-pot' brood pattern;
- Sunken, greasy or perforated, darkened cell cappings;
- Roping, sticky larval remains when drawn out with a matchstick;
- Dark "scales", which are difficult to remove from cells.

## Spread of foulbrood

The most common way in which foulbrood transmits from infected colony to healthy colony is the beekeeper. This can occur when frames of honey or brood are moved between colonies, or if other contaminated equipment is used. However, robbing by adult bees of dead or dying infected colonies is also an important mode of transmission. Swarms from infected colonies may also carry infection with them.

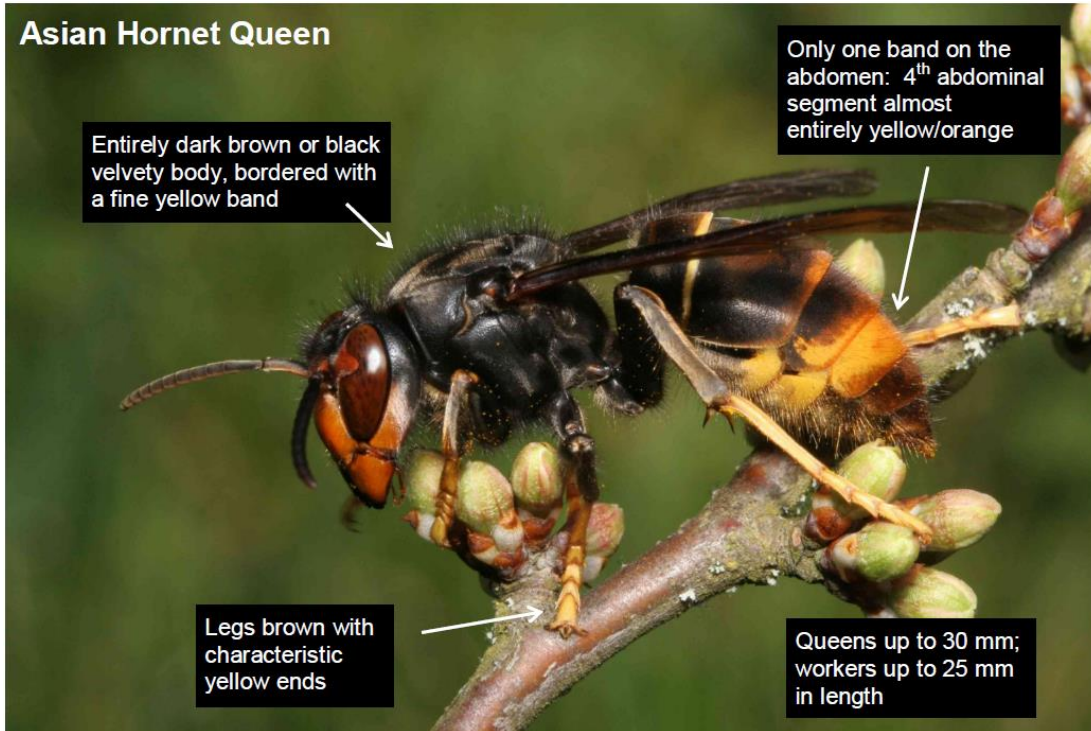
## Precautions to take if you suspect your colony has foulbrood

- Close the hive.
- Reduce the hive entrance to prevent robbing - take other steps if necessary.
- Disinfect your beekeeping equipment and gloves before examining other colonies, or if you use disposable gloves, select a new pair;
- Either contact your local Bee Inspector immediately or the NBU office. (Kay Wreford, [email](#))
- Do not remove any colonies, equipment or honey from the site until the disease (if confirmed) has been controlled. This is a self-imposed 'Standstill' which is a requirement under the legislation.

Taken from NBU [website](#)



## ASIAN HORNETS



Most likely to be confused with European Hornet. Less likely to be confused with queen Median Wasp. Main difference between European Hornet and Asian Hornet is the latter is slightly smaller, has characteristic yellow legs, a dark velvety thorax and a dark abdomen with a distinctive yellow band on the fourth segment. Asian Hornets are never active at night whereas European Hornets may be. Median Wasp queen is smaller, has some yellow on the thorax (unlike Asian Hornet) and lacks the characteristic feet and abdomen of Asian Hornet. Further reading from Non-Native Species Secretariat [here](#), who also get the picture credits.



## COLLETES HEDERAE FAQ'S

### >>What is an Ivy Bee?

The Ivy Bee is a species of mining bee that was first recorded in Britain in 2001. As the name suggests, it forages almost exclusively at flowers of Ivy, and flies only from September to mid-November (*i.e.* during the flowering period of Ivy).



### >> What are they doing in my lawn?

These bees are nesting in the lawn. The nesting aggregations are often dense and the number of nests can get as large as 10's of thousands. They prefer loose soil.

### >>Do these bees sting?

Well... the females can sting, but to get them to do this you'd have to pick them up and squeeze them. I have sat in the midst of nesting aggregations of tens of thousands of these bees and never been touched, let alone stung. The vast majority of the bees in these so-called swarms are males, and have no sting whatsoever. They are swarming over the ground on the look out for emerging females. Basically, *C. hederae* is all but completely safe with children and pets

### >>Will they reappear on the lawn next year?

Yes... they have a flight period of about 6 weeks in the Autumn. That's it each year

### >>Is it a protected species?

No... the bees are not protected. However, in view of the overall decline of so many bee species, coupled with the fact that these are a new colonist to this island, and they are bucking the general population trends, destruction is completely unnecessary. The advice is simply "enjoy them - not everyone is so lucky that they have a nesting aggregation in their lawns". They are important pollinators of Ivy, a plant which provides valuable food for birds in the late winter.



### >>How can they be destroyed/prevent a similar occurrence next year?

I think you can guess what the answer will be here. Councils will not destroy the bees and destruction of such a wonderful and harmless species, a species whose nesting behaviour is one of the truly spectacular examples of "wild nature" in Britain is to be strongly discouraged. They are absolutely not a danger. Live and let live

### >>Is there any further information available?

BWARS has prepared an [Information Sheet](#). BWARS is also conducting a mapping project to plot the spread year on year, and so all data on distribution is very gratefully received. The relevant webpages are at [this link](#)

Hymettus Ltd is the premier source of advice on the conservation of bees, wasps and ants within Great Britain and Ireland. <http://hymettus.org.uk/>



## BEEKEEPERS @ KSRC

Courses in Winter 2016/7

# Beekeepers @ KSRC



Through the winter, Beekeepers at KSRC will repeat its very successful "Improver Key Skills" course. It's a five session course as follows:

The five sessions can be booked together for £25 (non-refundable). Topics that will be covered:

- Bee & colony life-cycles, reading the colony, translating that into management actions
- Swarm control – an in-depth understanding of natural swarming, and its prevention
- Managing varroa – the key to healthy bees; monitoring and treatments, inc. non-chemical.
- winter management
- Health and Hygiene

We plan to hold the course both in East Kent (10 January – 7<sup>th</sup> February), as well as a November course (1-29 Nov), at Tyland Barn near Maidstone. The more local course will be at the The BeeBarn - the training centre that is part of Bee Equipment's facilities at Highland Court Farm in Bridge, near Canterbury. It has a modern, well-equipped meeting/lecture room, with room for 35 delegates.

All these sessions are not intended for novices; our target audience is definitely "Improvers" - those who have kept bees for a season or two and are keen to learn more, to improve their understanding and management of their bees. So, if you are interested, bookings may be made from the KSRC website - [www.ksrcbees.org.uk](http://www.ksrcbees.org.uk)

Bob Smith, Julie Coleman and Adrian Davis

## ESSEX BEEKEEPERS CONFERENCE

5<sup>th</sup> November 2016

'Raising the Standards of Beekeeping Husbandry'

We cannot know what the burning issue for bee research will be by November 2016, and there will surely be practical challenges ahead (small hive beetle, tropilaelaps, Japanese hornet), but we can strive to keep our bees strong, healthy, and fit for the challenges by improving our knowledge and husbandry skills.



Let our speakers tell you how. All three are well-known, experienced and entertaining speakers with many years of practical beekeeping to draw on.

- Celia Davis NDB – "Beekeeper versus Bee"
- Gerry Collins NDB – "What's going on in my Hive?"
- Robert Smith NDB – "Wild and Spaced Out!"

Ticket price : £25 includes lunch.

Other attractions include excellent raffle prizes and trade stands.

More details and the application form [here](#)

Contacts for queries:

Alan Kingsford [Conference Secretary](#)

Pat Allen [Division Secretary](#)